



Alachua County

Alachua County Forever's Lochloosa Creek Phifer Tract



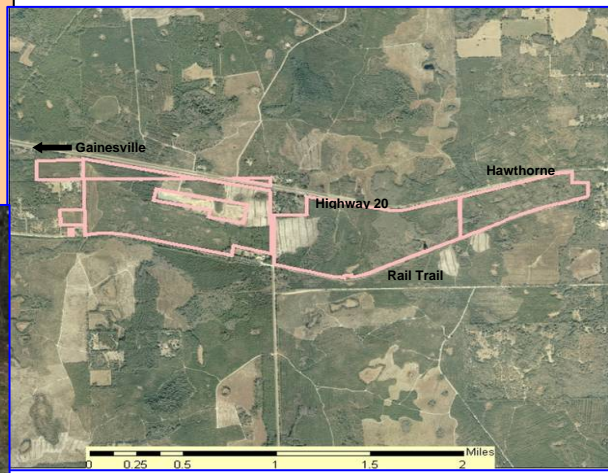
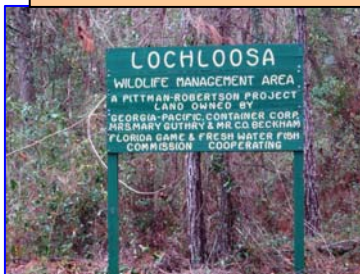
Phifer Flatwoods buffers 3 miles of the Gainesville-Hawthorne State Rail-Trail

Purchase Date: February 10, 2006
Seller: Plum Creek Timberlands through Alachua Conservation Trust
Purchase Price: \$2,882,293
Size: 644 acres
Score: 7.87 out of 10.00

- The Phifer property is located halfway between Gainesville and Hawthorne between SR 20 and the Gainesville-Hawthorne State Rail Trail (GHSRT).
- The property protects 3 miles of the GHSRT.
- The property also buffers the 27,400-acre Lochloosa Wildlife Management Area, owned by Plum Creek and the St. Johns River Water Management District.
- Phifer Flatwoods is a critical link in a regional wildlife corridor that runs north-south between the Ocala National Forest and the Okefenokee Swamp.
- This corridor is used by large mammals, such as the Florida black bear; by migratory birds; and has a diversity of plant life in its mosaic of uplands and wetlands.
- This acquisition was made possible through the generous donation and support of the community. Alachua Conservation Trust was able to raise almost \$3 million privately and purchase the property and provide the County time to perform its due diligence.
- Property will be managed as a preserve adding to the amenities available to users of the GHSRT.

Program Notes

- ✓ Alachua County Forever responds to public nominations.
- ✓ Property owners must be willing. Condemnation of property is not permitted under Alachua County Forever.
- ✓ Projects evaluated by staff and the Land Conservation Board.
- ✓ Criteria include protection of water resources, habitats, species, social value, manageability, and the economics of the acquisition.
- ✓ The County Commission approves acquisition projects.
- ✓ County can acquire property outright or certain rights through less-than-fee mechanisms such as conservation easements.
- ✓ Offers are made based on independent, private appraisals.
- ✓ Program funded by \$29 million in voter-approved bonds.
- ✓ Program actively seeks state, federal and private grants.
- ✓ Properties are managed as preserves.
- ✓ Resource-compatible, passive recreation is encouraged on sites where appropriate.



ALACHUA COUNTY FOREVER REFERENDUM

Approved in November 2000 by the voters, to acquire, improve and manage the county's environmentally sensitive lands to protect water resources, wildlife habitats and natural areas suitable for resource-based recreation.

For more information:

Ramesh P. Buch, Program Manager
 Alachua County Forever
 201 SE Second Avenue, Suite 201
 Gainesville, Florida 32601
 (352) 264-6800
rbuch@alachua.fl.us
http://environment.alachua.fl.us/Land_Consevation/index.htm



Alachua County Commission

Lee Pinkoson, Chair
 Paula M. DeLaney, vice-Chair
 Cynthia Moore-Chestnut
 Rodney J. Long
 Mike Byerly
Administration

Randall H. Reid, County Manager
 J. Chris Bird, Environmental Protection Dept. Director

