



Alachua County

Alachua County Forever's Lake Forest Creek Kincaide & Tabone Conservation Easement



ALACHUA COUNTY FOREVER MISSION

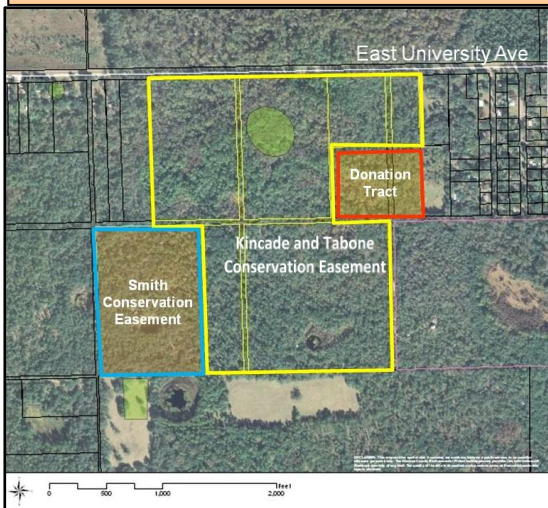
Approved in November 2000 by the voters, to acquire, improve and manage the county's environmentally sensitive lands to protect water resources, wildlife habitats and natural areas suitable for resource-based recreation.

Program Notes

- ✓ Alachua County Forever responds to public nominations.
- ✓ Property owners must be willing. Condemnation of property is not permitted under Alachua County Forever.
- ✓ Projects evaluated by staff and the Land Conservation Board.
- ✓ Criteria include protection of water resources, habitats, species, social value, manageability, and the economics of the acquisition.
- ✓ The County Commission approves acquisition projects.
- ✓ County can acquire property outright or certain rights through less-than-fee mechanisms such as conservation easements.
- ✓ Offers are made based on independent, private appraisals.
- ✓ Program funded by \$29 million in voter-approved bonds and \$15 million in Sales Surtax.
- ✓ Program actively seeks state, federal and private grants.
- ✓ Properties are managed as preserves.
- ✓ Resource-compatible, passive recreation is encouraged on sites where appropriate.

Purchase Date: January 12, 2012
Seller: Ivor Kincaide & JulieAnne Tabone
Purchase Price: \$170,000 **Size:** 114 acres

- The Kincaide & Tabone Conservation Easement is located approximately 1.2 miles east of SE 43rd Street between East University and SE 8th Avenues, generally northeast of Eastside High School.
- The property is composed of sandhill, mesic flatwoods, baygall, depression marsh, blackwater stream, and basin swamp. The wetland communities are in good to excellent condition. The large basin swamp that lies on the northern section of the property extends to the north and west. The northern portion of this wetland is owned by the State of Florida and drains to Newnan's Lake. In the other direction, other branches of Lake Forest Creek connect to Morningside Nature Center via State of Florida holdings.
- The grantors also donated a conservation easement on an adjacent 10 acres.
- This is the thirty-ninth acquisition by ACF and the twelfth acquisition using the Wild Spaces and Public Places Surtax, approved by the voters in 2008 to extend the ACF Program.



For more information:
 Ramesh P. Buch, Program Manager
 Alachua County Forever
 201 SE Second Avenue, Suite 201
 Gainesville, Florida 32601
 (352) 264-6800
<http://alachuacountyforever.us>



Alachua County Commission

Paula M. DeLaney, Chair
 Mike Byerly, Vice-Chair
 Lee Pinkoson
 Rodney J. Long
 Susan Baird

Administration

Randall H. Reid, County Manager
 Chris Bird, Environmental Protection Dept. Director

