



Alachua County

Alachua County Forever's Lake Forest Creek Smith Addition Conservation Easement

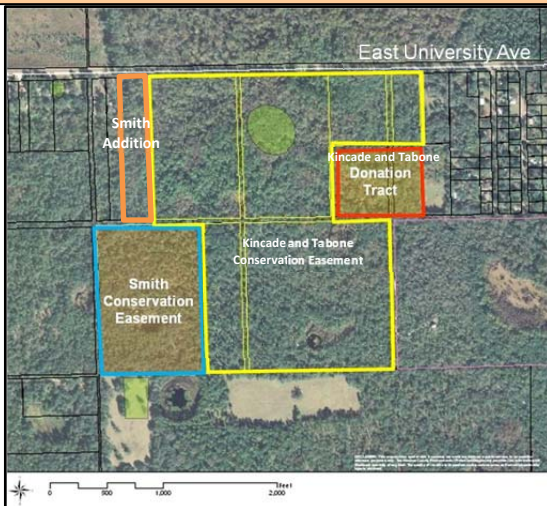


ALACHUA COUNTY FOREVER MISSION

Approved in November 2000 by the voters, to acquire, improve and manage the county's environmentally sensitive lands to protect water resources, wildlife habitats and natural areas suitable for resource-based recreation.

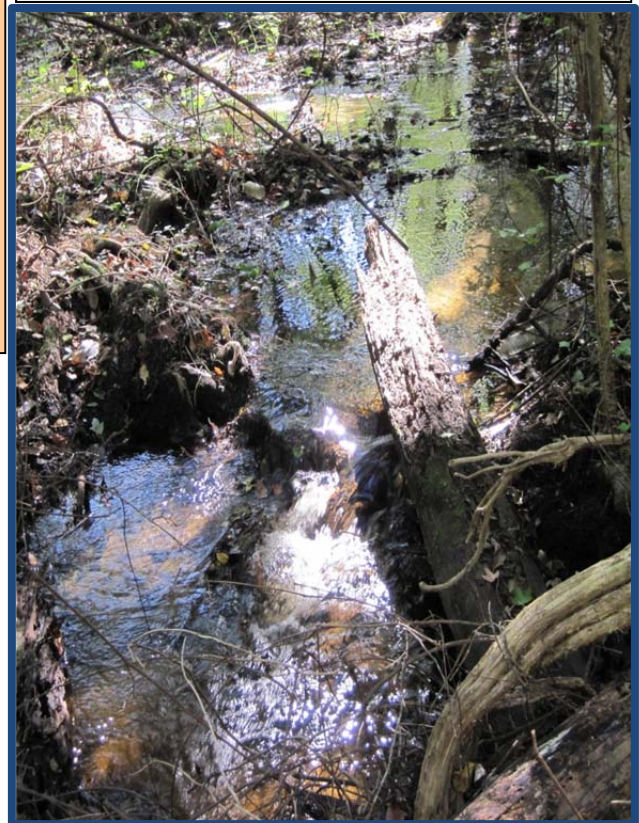
Program Notes

- ✓ Alachua County Forever responds to public nominations.
- ✓ Property owners must be willing. Condemnation of property is not permitted under Alachua County Forever.
- ✓ Projects evaluated by staff and the Land Conservation Board.
- ✓ Criteria include protection of water resources, habitats, species, social value, manageability, and the economics of the acquisition.
- ✓ The County Commission approves acquisition projects.
- ✓ County can acquire property outright or certain rights through less-than-fee mechanisms such as conservation easements.
- ✓ Offers are made based on independent, private appraisals.
- ✓ Program funded by \$29 million in voter-approved bonds and \$15 million in Sales Surtax.
- ✓ Program actively seeks state, federal and private grants.
- ✓ Properties are managed as preserves.
- ✓ Resource-compatible, passive recreation is encouraged on sites where appropriate.



Purchase Date: December 17, 2012
Seller: Erick Smith
Purchase Price: Donation **Size:** 7 acres

- The Smith Addition Conservation Easement Donation increases the original Smith Conservation Easement by 7 acres to a total of 37 acres
- It is located approximately 1.2 miles east of SE 43rd Street on East University, generally northeast of Eastside High School and adjacent to the larger Kincade & Tabone Conservation Easement.
- The Smith property is composed mostly of uplands including sandhill, upland pine forest, upland mixed forest and a sinkhole.
- The Lake Forest Creek Project Area falls within the Plan East Gainesville Project Area. The Plan East Gainesville-Final Report represents "a comprehensive economic revitalization plan that achieves a balance of environmental preservation with land development and improved transportation mobility" (page 2 of the Final Report).
- This is the forty-fifth acquisition by ACF and the seventeenth acquisition using the Wild Spaces and Public Places Surtax, Approved by the voters in 2008 to extend the ACF Program.



For more information:
 Ramesh P. Buch, Program Manager
 Alachua County Forever
 408 E University Avenue, Suite 106
 Gainesville, Florida 32601
 (352) 264-6800
<http://alachuacountyforever.us>



Alachua County Commission

Mike Byerly, Chair
 Lee Pinkoson, Vice-Chair
 Susan Baird
 Charles S. Chestnut IV
 Robert "Hutch" Hutchinson

Administration

Richard Drummond, Interim County Manager
 Chris Bird, Environmental Protection Dept. Director

