



# Alachua County

## Alachua County Forever's Paynes Prairie Crevasse CBI Addition



**Purchase Date:** December 9, 2010  
**Seller:** Alachua Conservation Trust  
**Purchase Price:** \$415,316      **Size:** 96 acres

- The Crevasse CBI Addition Conservation Easement is adjacent to the west side of Paynes Prairie Preserve State Park and Prairie Creek Conservation Area on CR 234.
- This acquisition adds to conservation efforts in the area on the part of the State Park Service, Alachua Conservation Trust and Alachua County.
- The property consists of rough pasture, basin swamp, hydric hammock, floodplain swamp, depression marsh, xeric hammock and mesic flatwoods.
- Unique to this conservation easement is the operation of a Conservation Cemetery on the property. this provides an alternative to traditional burials and provides funds for site restoration and further conservation.
- This is the eighth acquisition using the Wild Spaces and Public Places Surtax, approved by the voters in 2008 to extend the ACF Program.



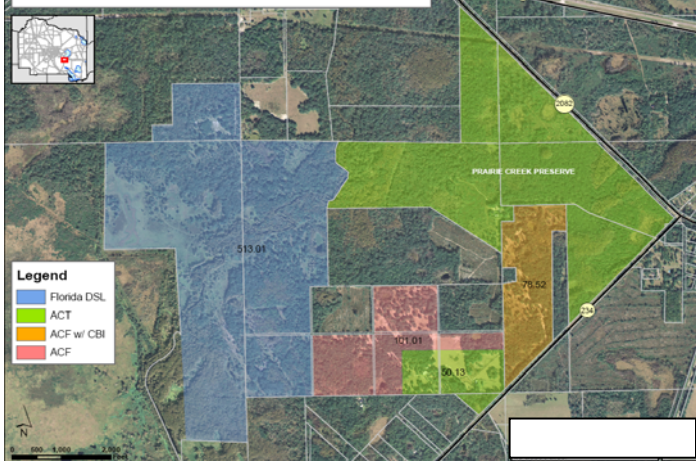
### ALACHUA COUNTY FOREVER MISSION

*Approved in November 2000 by the voters, to acquire, improve and manage the county's environmentally sensitive lands to protect water resources, wildlife habitats and natural areas suitable for resource-based recreation.*

### Program Notes

- ✓ Alachua County Forever responds to public nominations.
- ✓ Property owners must be willing. Condemnation of property is not permitted under Alachua County Forever.
- ✓ Projects evaluated by staff and the Land Conservation Board.
- ✓ Criteria include protection of water resources, habitats, species, social value, manageability, and the economics of the acquisition.
- ✓ The County Commission approves acquisition projects.
- ✓ County can acquire property outright or certain rights through less-than-fee mechanisms such as conservation easements.
- ✓ Offers are made based on independent, private appraisals.
- ✓ Program funded by \$29 million in voter-approved bonds and \$15 million in Sales Surtax.
- ✓ Program actively seeks state, federal and private grants.
- ✓ Properties are managed as preserves.
- ✓ Resource-compatible, passive recreation is encouraged on sites where appropriate.

### Prairie Creek Preserve & Prairie Creek Ranch



**For more information:**  
Ramesh P. Buch, Program Manager  
Alachua County Forever  
201 SE Second Avenue, Suite 201  
Gainesville, Florida 32601  
(352) 264-6800  
<http://alachuacountyforever.us>



### Alachua County Commission

Lee Pinkoson, Chair  
Paula M. DeLaney, Vice-Chair  
Rodney J. Long  
Mike Byerly  
Susan Baird

### Administration

Randall H. Reid, County Manager  
Chris Bird, Environmental Protection Dept. Director

