



Alachua County

Alachua County Forever's Paynes Prairie Crevasse Ranch Addition



Purchase Date: December 9, 2010
Seller: Alachua Conservation Trust
Purchase Price: \$415,316 **Size:** 96 acres

- The Crevasse Ranch Addition is adjacent to the west side of Paynes Prairie Preserve State Park on CR 234.
- This acquisition adds to conservation efforts in the area on the part of the State Park Service, Alachua Conservation Trust and Alachua County.
- The property also buffers Prairie Creek which is part of the system connecting Newnan's Lake to Paynes Prairie.
- The Crevasse Family homestead and the surrounding 50 acres were retained by Alachua Conservation Trust to be used as a regional conference center.
- The property contains a mosaic of uplands and wetland natural communities associated with Prairie Creek. It includes some magnificent hydric hammock with large live oaks, some partially cleared pasture areas, and an assortment of other habitats in small patches.

- This is the seventh acquisition using the Wild Spaces and Public Places Surtax, approved by the voters in 2008 to extend the ACF Program.



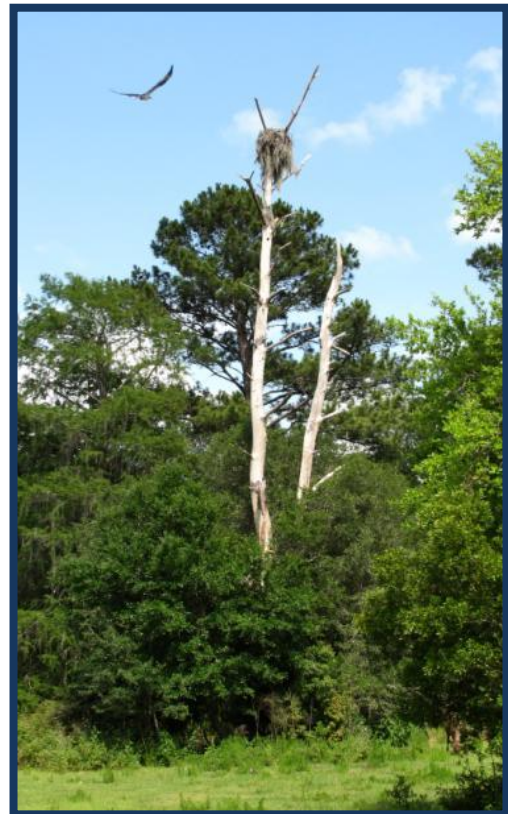
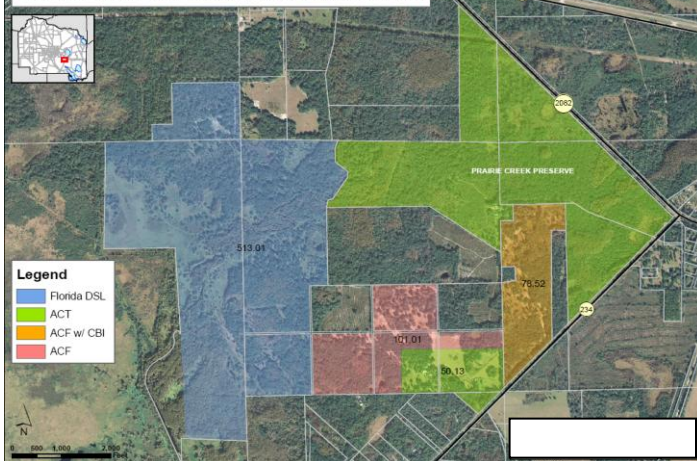
ALACHUA COUNTY FOREVER MISSION

Approved in November 2000 by the voters, to acquire, improve and manage the county's environmentally sensitive lands to protect water resources, wildlife habitats and natural areas suitable for resource-based recreation.

Program Notes

- ✓ Alachua County Forever responds to public nominations.
- ✓ Property owners must be willing. Condemnation of property is not permitted under Alachua County Forever.
- ✓ Projects evaluated by staff and the Land Conservation Board.
- ✓ Criteria include protection of water resources, habitats, species, social value, manageability, and the economics of the acquisition.
- ✓ The County Commission approves acquisition projects.
- ✓ County can acquire property outright or certain rights through less-than-fee mechanisms such as conservation easements.
- ✓ Offers are made based on independent, private appraisals.
- ✓ Program funded by \$29 million in voter-approved bonds and \$15 million in Sales Surtax.
- ✓ Program actively seeks state, federal and private grants.
- ✓ Properties are managed as preserves.
- ✓ Resource-compatible, passive recreation is encouraged on sites where appropriate.

Prairie Creek Preserve & Prairie Creek Ranch



For more information:
Ramesh P. Buch, Program Manager
Alachua County Forever
201 SE Second Avenue, Suite 201
Gainesville, Florida 32601
(352) 264-6800
<http://alachuacountyforever.us>



Alachua County Commission

Lee Pinkoson, Chair
Paula M. DeLaney, Vice-Chair
Rodney J. Long
Mike Byerly
Susan Baird

Administration

Randall H. Reid, County Manager
Chris Bird, Environmental Protection Dept. Director

