



Alachua County

Alachua County Forever's Santa Fe River - Bradham



ALACHUA COUNTY FOREVER MISSION

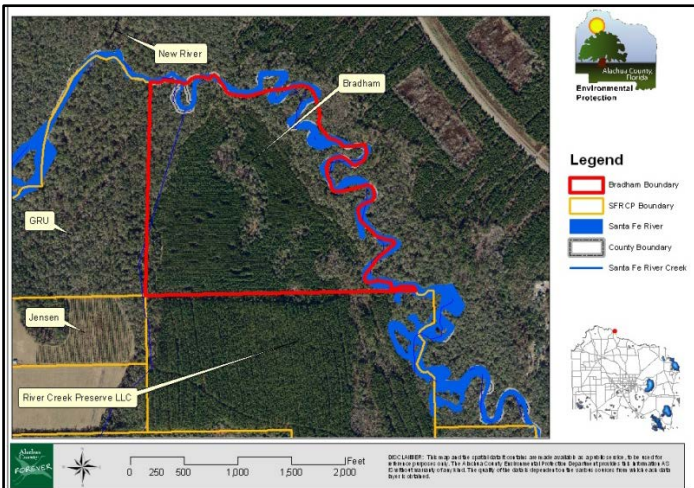
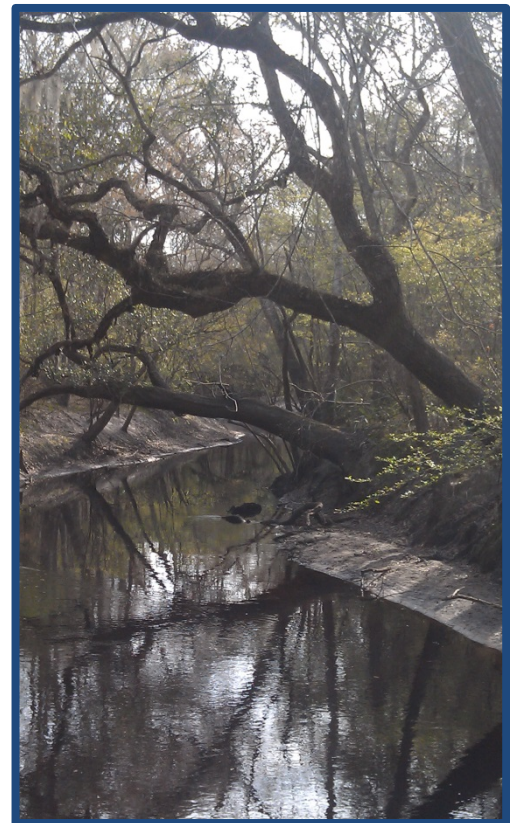
Approved in November 2000 by the voters, to acquire, improve and manage the county's environmentally sensitive lands to protect water resources, wildlife habitats and natural areas suitable for resource-based recreation.

Program Notes

- ✓ Alachua County Forever responds to public nominations.
- ✓ Property owners must be willing. Condemnation of property is not permitted under Alachua County Forever.
- ✓ Projects evaluated by staff and the Land Conservation Board.
- ✓ Criteria include protection of water resources, habitats, species, social value, manageability, and the economics of the acquisition.
- ✓ The County Commission approves acquisition projects.
- ✓ County can acquire property outright or certain rights through less-than-fee mechanisms such as conservation easements.
- ✓ Offers are made based on independent, private appraisals.
- ✓ Program funded by \$29 million in voter-approved bonds and \$15 million in Sales Surtax.
- ✓ Program actively seeks state, federal and private grants.
- ✓ Properties are managed as preserves.
- ✓ Resource-compatible, passive recreation is encouraged on sites where appropriate.

Purchase Date: April 9, 2013
Seller: Cecelia Bradham Mansfield
Purchase Price: \$130,000 **Size:** 93.6 acres

- The 93.6 acre Bradham property is located in northern Alachua County along the Santa Fe River less than one mile south of the town of Worthington Springs and about 5.3 miles to the north of the town of La Crosse, about 0.5 miles east of S.R. 121.
- The property is being managed by Alachua Conservation Trust as a unit of the River Creek Preserve purchase with Florida Communities Trust funds in 2012.
- The property possesses approximately 1.3 miles of Santa Fe River frontage. The character of the Santa Fe River itself in this section is a shallow blackwater river with a deep amber tannin stain seen in front of the white sand deposits along its banks.
- This is the forty-eighth acquisition by ACF and the twentieth acquisition using the Wild Spaces and Public Places Surtax, approved by the voters in 2008 to extend the ACF Program.



For more information:
 Ramesh P. Buch, Program Manager
 Alachua County Forever
 408 West University Avenue, Suite 106
 Gainesville, Florida 32601
 (352) 264-6800
<http://alachuacountyforever.us>



Alachua County Commission

Mike Byerly, Chair
 Lee Pinkoson, Vice-Chair
 Susan Baird
 Charles "Chuck" Chestnut IV
 Robert "Hutch" Hutchinson

Administration

Richard Drummond, County Manager
 Chris Bird, Environmental Protection Dept. Director

