



Alachua County

Alachua County Forever's Santa Fe River – Running Over Ranch Conservation Easement



ALACHUA COUNTY FOREVER MISSION

Approved in November 2000 by the voters, to acquire, improve and manage the county's environmentally sensitive lands to protect water resources, wildlife habitats and natural areas suitable for resource-based recreation.

Program Notes

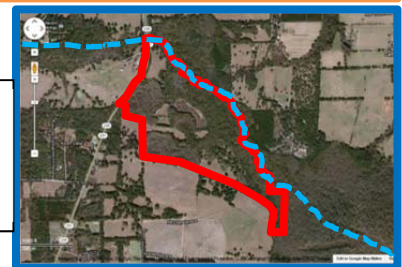
- ✓ Alachua County Forever responds to public nominations.
- ✓ Property owners must be willing. Condemnation of property is not permitted under Alachua County Forever.
- ✓ Projects evaluated by staff and the Land Conservation Board.
- ✓ Criteria include protection of water resources, habitats, species, social value, manageability, and the economics of the acquisition.
- ✓ The County Commission approves acquisition projects.
- ✓ County can acquire property outright or certain rights through less-than-fee mechanisms such as conservation easements.
- ✓ Offers are made based on independent, private appraisals.
- ✓ Program funded by \$29 million in voter-approved bonds and \$15 million in Sales Surtax.
- ✓ Program actively seeks state, federal and private grants.
- ✓ Properties are managed as preserves.
- ✓ Resource-compatible, passive recreation is encouraged on sites where appropriate.

Purchase Date: December 28, 2012
Seller: Running Over Ranch
Purchase Price: \$486,714 **Size:** 256 acres

- The property is located approximately two miles north of the City of LaCrosse, on the east side of CR 235. It has approximately 1.2 miles of frontage on the Santa Fe River, one of our most important wildlife and recreational corridors. The property is also adjacent to the west boundary of the Suwannee River WMD's Mud Swamp Conservation Area.
- The natural communities of the property include oxbows of the Santa Fe River, Floodplain swamp isolated wetlands, and upland mixed forest.
- Two ponds that were created during construction of CR 235 contain wading-bird rookeries.
- The Easement grantors own the adjacent improved pastures.
- This is the 46th acquisition by ACF and the 18th acquisition using the Wild Spaces and Public Places Surtax, approved by the voters in 2008 to extend the ACF Program.



The Easement and the location of the Santa Fe River



For more information:
 Ramesh P. Buch, Program Manager
 Alachua County Forever
 201 SE Second Avenue, Suite 201
 Gainesville, Florida 32601
 (352) 264-6800
<http://alachuacountyforever.us>



Alachua County Commission

Mike Byerly, Chair
 Lee Pinkoson, Vice-Chair
 Susan Baird
 Charles S. Chestnut, IV
 Robert "Hutch" Hutchinson

Administration

Richard A. Drummond, Acting County Manager
 Chris Bird, Environmental Protection Dept. Director

