



# Alachua County

## Alachua County Forever's Santa Fe River – AP&E Tract

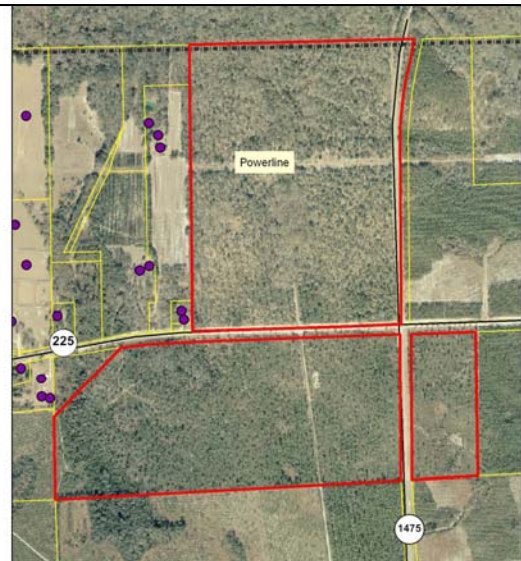


**Date:** February 7, 2006    **Purchase Price:** \$1,200,000  
**Seller:** AP&E    **Size:** 234 acres  
**Score:** 7.11 out of 10.00

- The AP&E parcel is south of the Santa Fe River in north east Alachua County at the intersection on CR 1475 and CR 235.
- It was the first acquisition in the top-ranked Santa Fe River Project.
- It lies in an area of the county where the Santa Fe River is not the northern county boundary so the property does not have any river frontage. It does however still buffer the river and contains part of the floodplain and forest associated with the river.
- There is a small unnamed creek running through the property that drains into the river, and some high quality mesic and wet flatwoods.
- Habitat quality ranges from good to excellent and the property provides good mast production and wildlife cover.
- The AP&E property will provide excellent opportunities for resource based recreation, including hiking and wildlife observation. It is easily accessible via CR 225 or 1475.
- This was the third acquisition made with the assistance of The Nature Conservancy.

### Program Notes

- ✓ Alachua County Forever responds to public nominations.
- ✓ Property owners must be willing. Condemnation of property is not permitted under Alachua County Forever.
- ✓ Projects evaluated by staff and the Land Conservation Board.
- ✓ Criteria include protection of water resources, habitats, species, social value, manageability, and the economics of the acquisition.
- ✓ The County Commission approves acquisition projects.
- ✓ County can acquire property outright or certain rights through less-than-fee mechanisms such as conservation easements.
- ✓ Offers are made based on independent, private appraisals.
- ✓ Program funded by \$29 million in voter-approved bonds.
- ✓ Program actively seeks state, federal and private grants.
- ✓ Properties are managed as preserves.
- ✓ Resource-compatible, passive recreation is encouraged on sites where appropriate.



### ALACHUA COUNTY FOREVER REFERENDUM

*Approved in November 2000 by the voters, to acquire, improve and manage the county's environmentally sensitive lands to protect water resources, wildlife habitats and natural areas suitable for resource-based recreation.*

#### For more information:

Ramesh P. Buch, Program Manager  
 Alachua County Forever  
 201 SE Second Avenue, Suite 201  
 Gainesville, Florida 32601  
 (352) 264-6800  
[rbuch@alachua.fl.us](mailto:rbuch@alachua.fl.us)  
[http://environment.alachua.fl.us/Land\\_Consevation/index.htm](http://environment.alachua.fl.us/Land_Consevation/index.htm)



#### Alachua County Commission

Lee Pinkoson, Chair  
 Paula M. DeLaney, vice-Chair  
 Cynthia Moore-Chestnut  
 Rodney J. Long  
 Mike Byerly

#### Administration

Randall H. Reid, County Manager  
 J. Chris Bird, Environmental Protection Dept. Director

