



Alachua County

Alachua County Forever

Lake Santa Fe — Lake Alto North Addition



View of Lake Alto

Sellers: Lake Alto LLC. (Alto Straughn)

Purchase Price: \$400,000

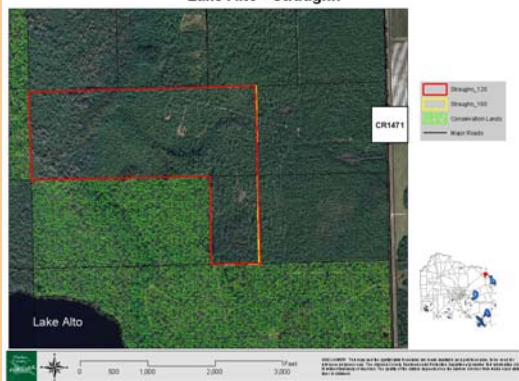
Size: 120 acres

- The 280-acre Cox & Moore property is located on CR-1471 immediately north of Alachua County's Lake Alto Preserve (Alachua County Forever Crosley & Crosley) and immediately east of Suwannee River Water Management District's Lake Alto Swamp Property.
- Acquisition of this property improves the quality of the connection between the 280-acre Lake Alto Preserve and Lake Alto Swamp(1,548 acres).
- The property is in good condition, consisting of typical lake shore swamp surrounding Lake Alto that is dominated by large majestic loblolly bays which grades into wet and then mesic flatwoods to the east.

Program Notes

- Alachua County Forever responds to public nominations.
- Property owners must be willing. Condemnation of property is not permitted under Alachua County Forever.
- Projects evaluated by staff and the Land Conservation Board.
- Criteria include protection of water resources, habitats, species, social value, manageability, and the economics of the acquisition.
- The County Commission approves acquisition projects.
- County can acquire property outright or certain rights through less-than-fee mechanisms such as conservation easements.
- Offers are made based on independent, private appraisals.
- Program funded through a \$29 million in voter-approved bonds.
- Program actively seeks state, federal and private grants.
- Properties are managed as preserves.
- Resource-compatible, passive recreation is encouraged on sites where appropriate.

Lake Alto - Straughn



The flatwoods on the property

ALACHUA COUNTY FOREVER REFERENDUM

Approved in November 2000 by the voters, to acquire, improve and manage the county's environmentally sensitive lands to protect water resources, wildlife habitats and to provide natural areas suitable for resource-based recreation.

For more information:
 Ramesh P. Buch, Program Manager
 Alachua County Forever
 201 SE Second Avenue, Suite 201
 Gainesville, Florida 32601
 Ph: (352) 264-6800. Fax: (352) 264-6852
 Email: rbuch@alachuacounty.us
 Website: <http://www.alachuacounty.us/government/depts/epd/land/>



Alachua County Commission
 Rodney J. Long, Chair
 Mike Byerly, Vice-Chair
 Cynthia Moore-Chestnut
 Lee Pinkoson
 Paula DeLaney

County Manager
 Randall H. Reid

Environmental Protection Dept.
 Chris Bird, Director