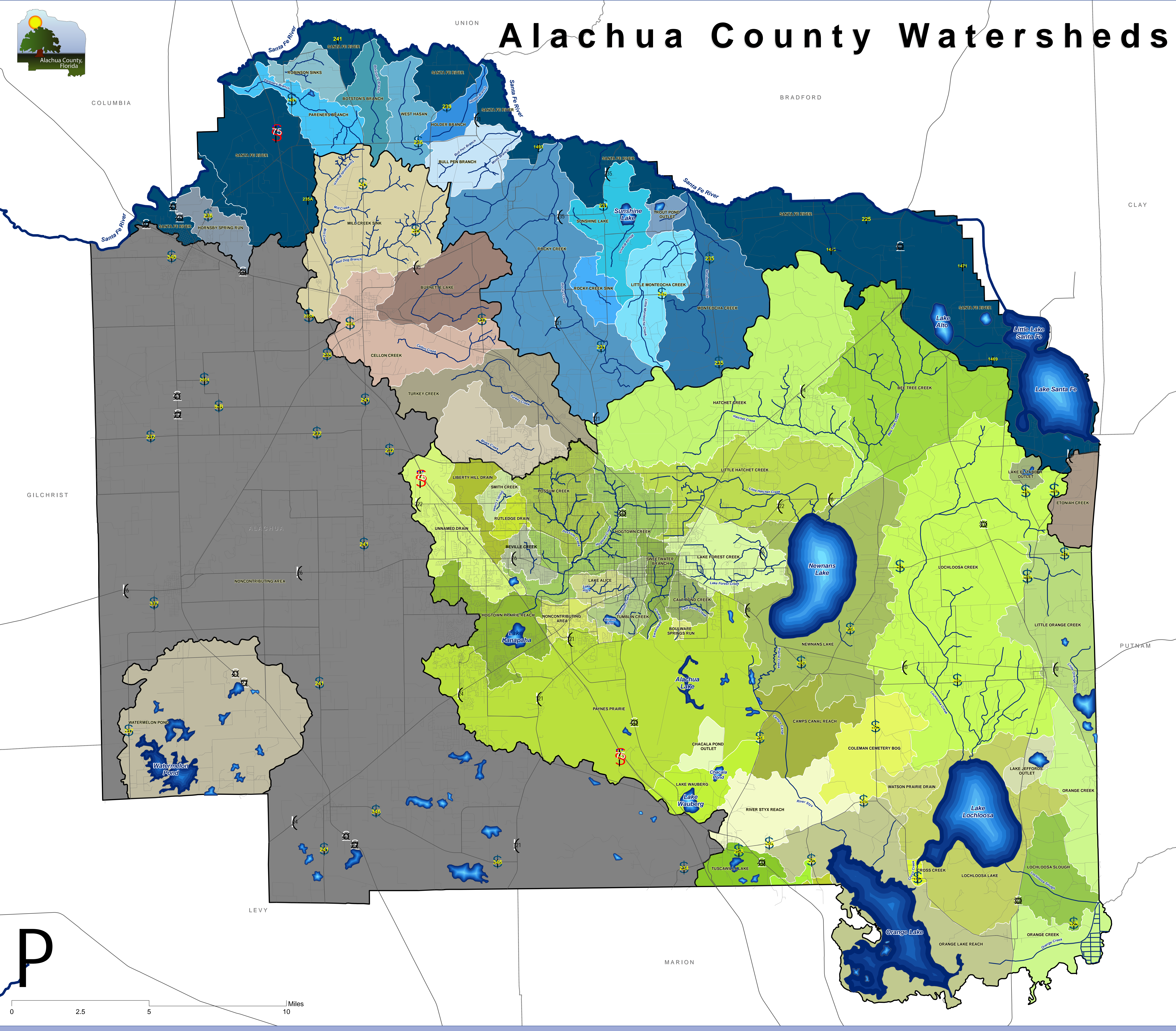




Alachua County Watersheds



Santa Fe River Basin Watersheds

- BOTSTON'S BRANCH
- BULL PEN BRANCH
- HOLDER BRANCH
- HORNBY SPRING RUN
- LITTLE MONTEOCHA CREEK
- MILL CREEK SINK
- MONTEOCHA CREEK
- PARENERS BRANCH
- ROBINSON SINKS
- ROCKY CREEK
- ROCKY CREEK SINK
- SANTA FE RIVER
- SUNSHINE LAKE
- TROUT POND OUTLET
- WEST HASAN

Alachua Stream System Watersheds

- BLUES CREEK
- BURNETTE LAKE
- CELLON CREEK
- MILL CREEK SINK
- TURKEY CREEK

Orange Creek Basin Watersheds

- BEE TREE CREEK
- BEVILLE CREEK

Boulware Springs Run

- BOULWARE SPRINGS RUN
- CALF POND CREEK
- CAMPS CANAL REACH
- CHACALA POND OUTLET
- COLEMAN CEMETERY BOG
- CROSS CREEK
- EVINSTON DRAIN
- FISH PRAIRIE CREEK
- HATCHET CREEK

Hogtown Creek

- HOGTOWN CREEK
- HOGTOWN PRAIRIE REACH
- LAKE ALICE
- LAKE ELIZABETH OUTLET
- LAKE FOREST CREEK
- LAKE JEFFORDS OUTLET
- LAKE WAUBERG
- LIBERTY HILL DRAIN
- LITTLE HATCHET CREEK

Little Orange Creek

- LITTLE ORANGE CREEK
- LOCHLOOSA CREEK
- LOCHLOOSA LAKE
- LOCHLOOSA SLOUGH
- NONCONTRIBUTING AREA
- ORANGE CREEK
- ORANGE LAKE REACH
- PAYNES PRAIRIE
- POSSUM CREEK

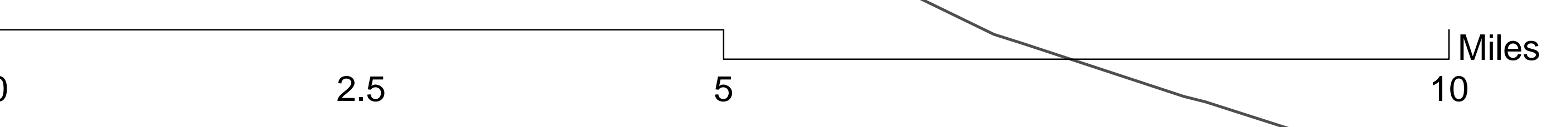
Prairie Creek Reach

- PRAIRIE CREEK REACH
- RIVER STYX REACH
- RUTLEDGE DRAIN
- SMITH CREEK
- SWEETWATER BRANCH
- TUMBLIN CREEK
- TUSCAWILLA LAKE
- UNNAMED DRAIN
- WATSON PRAIRIE DRAIN

Other Watersheds

- ETONIAH CREEK
- NONCONTRIBUTING AREA
- WATERMELON POND
- County Boundaries
- Major Roads
- Streets

- Rivers
- Creeks
- Lakes



DISCLAIMER: This map and the spatial data it contains are made available as a public service, to be used for reference purposes only. The Alachua County Environmental Protection Department provides this information AS IS without warranty of any kind, implied or expressed, regarding accuracy, completeness, or fitness for use. The quality of the data is dependent on the various sources from which each data layer is obtained. This map was created in September 2007 using the best available watershed data from FDEP, the City of Gainesville, and the Alachua County Environmental Protection Department.