

PRESERVE RULES

Help keep the preserve maintained:

- ◇ Pack out what you pack in
- ◇ Collecting or harassing plants, animals, artifacts or fossils is prohibited
- ◇ Leash and clean up after your dog
- ◇ Help prevent erosion – stay on trails
- ◇ No motorized vehicles except ADA equipment

For your safety:

- ◇ Keep out of closed areas
- ◇ Visitors who remain after hours are trespassing

ADVICE FOR TRAILS

Natural areas and wildlife may be hazardous.

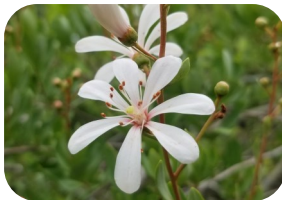
- ◇ Do not approach or harass wildlife

Be prepared for soft and uneven terrain

- ◇ Some trails are maintained as firebreaks and under wet conditions some trails are flooded

For your comfort and safety:

- ◇ Wear sunscreen and a hat, use insect repellent, carry water and a trail map



Alachua County and the City of Gainesville partnered in the purchase of the 715-acre Four Creeks Preserve in September 2018. The property contributes to the flow of four separate creek systems: Turkey, Blues, Possum, and Hogtown Creeks. In addition to its other ecological values, it is an important part of a potential wildlife corridor on the north side of the county.



Funding for the 470 acres purchased by the County came from the Wild Spaces and Public Places eight-year, one-half-cent sales tax passed by voters in 2016. Four Creeks Preserve is the first Alachua County Forever project to use this funding.



The mission of the Alachua County Forever program is to acquire, improve, and manage environmentally significant lands that protect water resources, wildlife habitat and natural areas suitable for resource-based recreation.

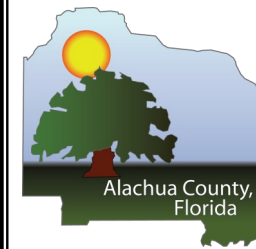
If you have a disability and need an accommodation in order to participate in a County program, service or public meeting, please contact the Equal Opportunity Office at 352-374-5275 at least 2 business days prior to the event. TDD users, please call 711 (Florida Relay Service)

**Alachua County
Environmental Protection Department
Office of Land Conservation**
408 W. University Avenue, Suite 106
Gainesville, FL 32601

Phone: 352-264-6868

E-mail: landconservation@alachuacounty.us

Web: <http://www.alachuacountyforever.us>



Gainesville.
Citizen centered
People empowered

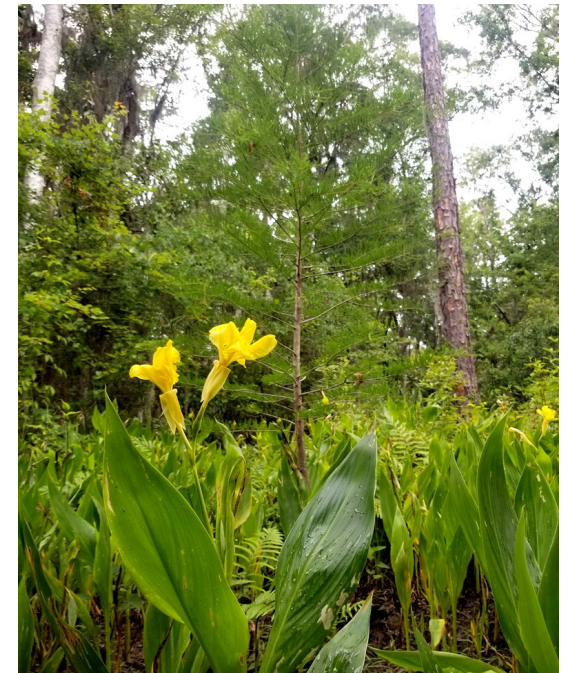
FOUR CREEKS PRESERVE

Walk-in Entrances:

South: 6845 NW 37th St., Gainesville FL

North: 8400 NW 13th St., Gainesville

TRAIL MAP



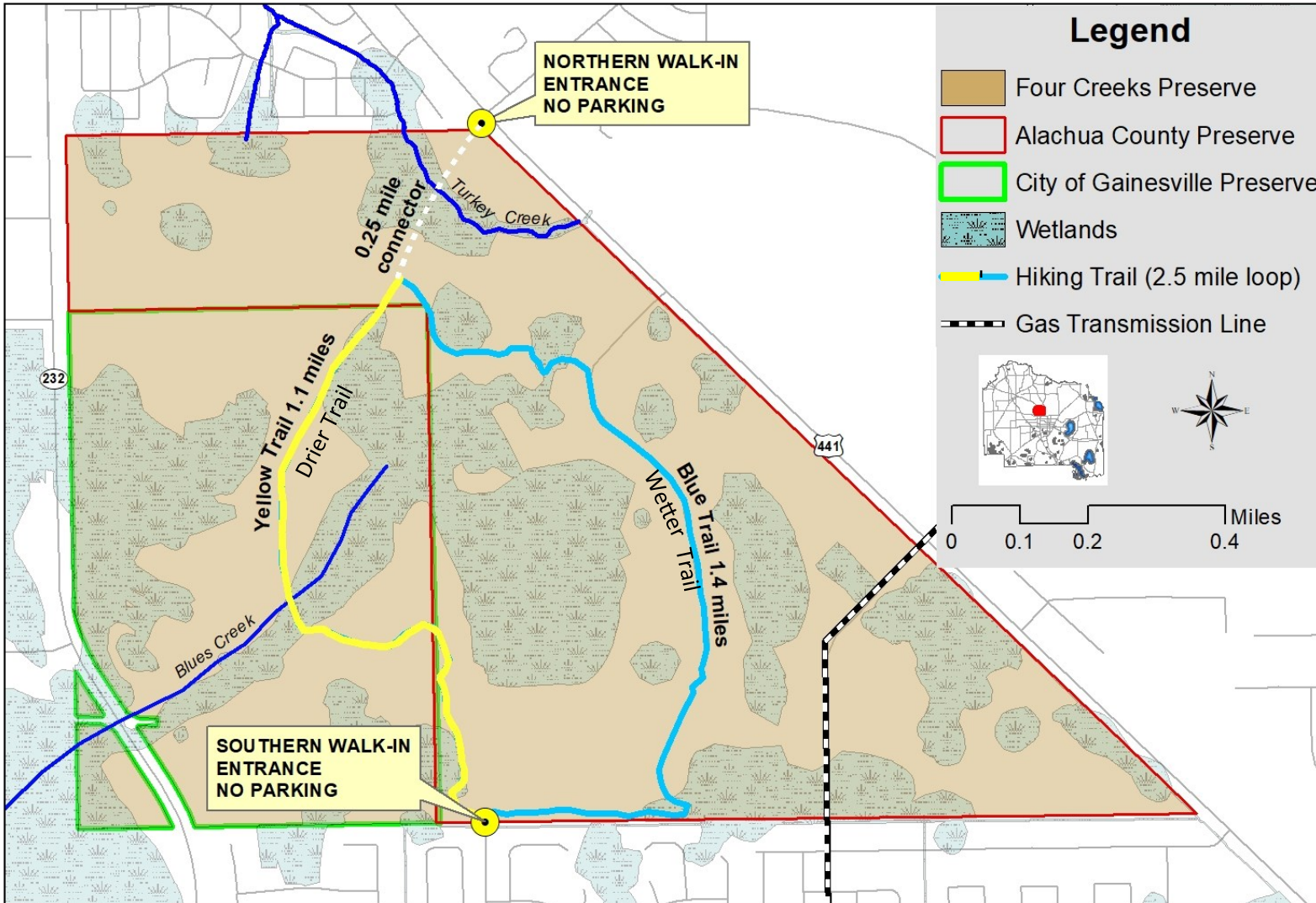
PRESERVE HOURS:

8:00a.m.—6:00p.m. November- April

8:00a.m.—8:00p.m. May- October



Four Creeks Preserve Trail Map



Special Site Conditions:

The Preserve is currently open for pedestrian access only. Parking is not permitted.

Please respect our neighbors' privacy by staying on marked trails.

Trailheads and trail routes are subject to change as the management plan for the Preserve is finalized.

Be advised that the Preserve contains several hundred acres of wetlands. Trails may be seasonally flooded.

At these times, a walk at Four Creeks will bring you face to face with the importance of this site in wetland protection.

