



# **Climate Action Plan Presentation I**

**Nov 16, 2024**

**Stephen Hofstetter**



# Climate Action Plan



## Purpose & Vision Statement

*To guide, develop, and cultivate environmentally, socially, and economically resilient strategies and equitable solutions to climate change for the whole community.*

# Climate Action Plan Outline

## Major Chapters

1. Energy
2. Land Use and Transportation
3. Natural Resources
4. Water
5. Waste
6. Flooding
7. Mental Health
8. Ag & Food Security
9. Green Jobs

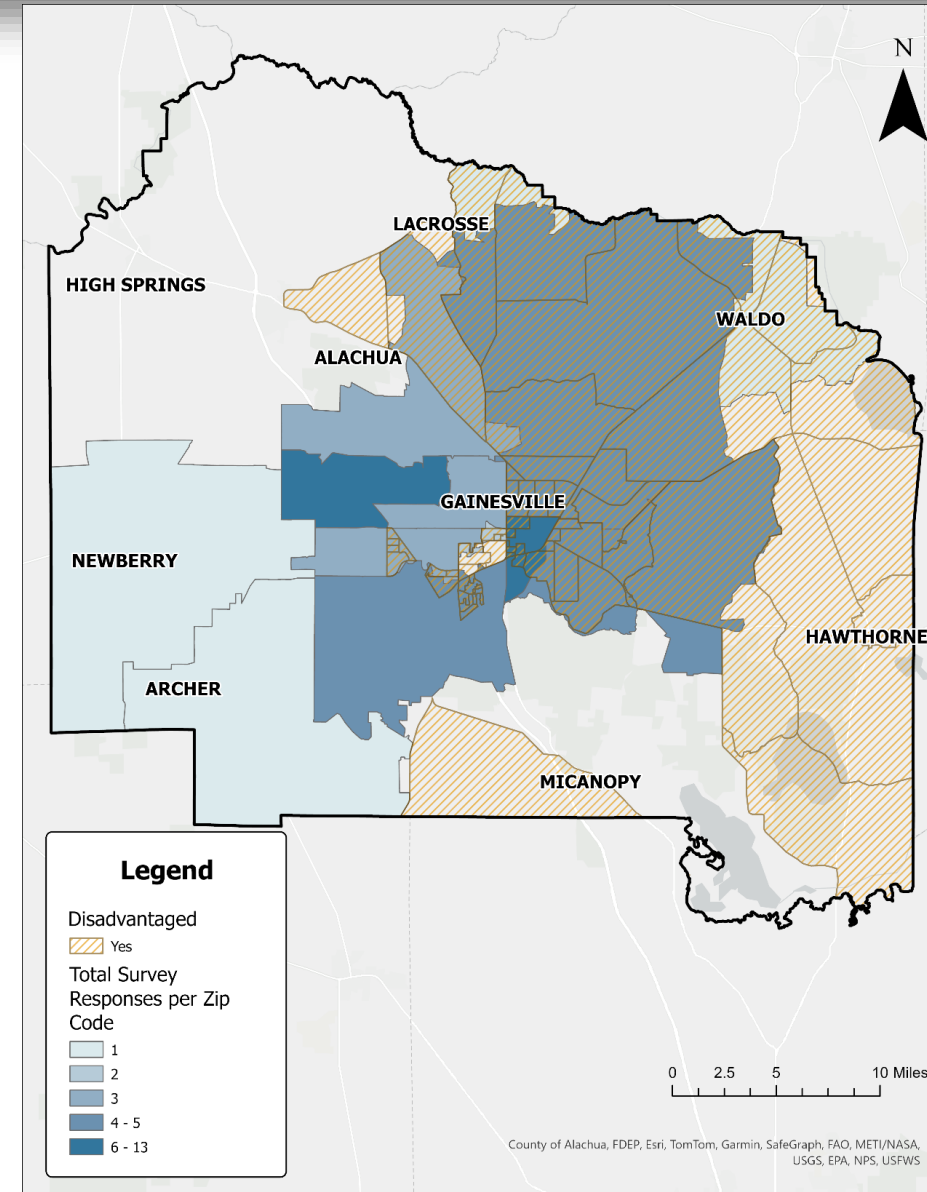


# Climate Action Plan Outline



## Themes

1. Equity
2. Baseline and Targets
3. Past and Current Efforts
4. Future Strategies and Action Items



# Climate Action Plan – 2025/2026 Large Scale Assessments



- **Critical Infrastructure (roads, schools, etc.)  
Planning Grant**

**Resiliency**

- **Update Greenhouse Gas Inventory Report**

**Mitigation**

- **Urban/Community Forest Management Plan**

**Quality of Life**

# Large Scale Initiatives

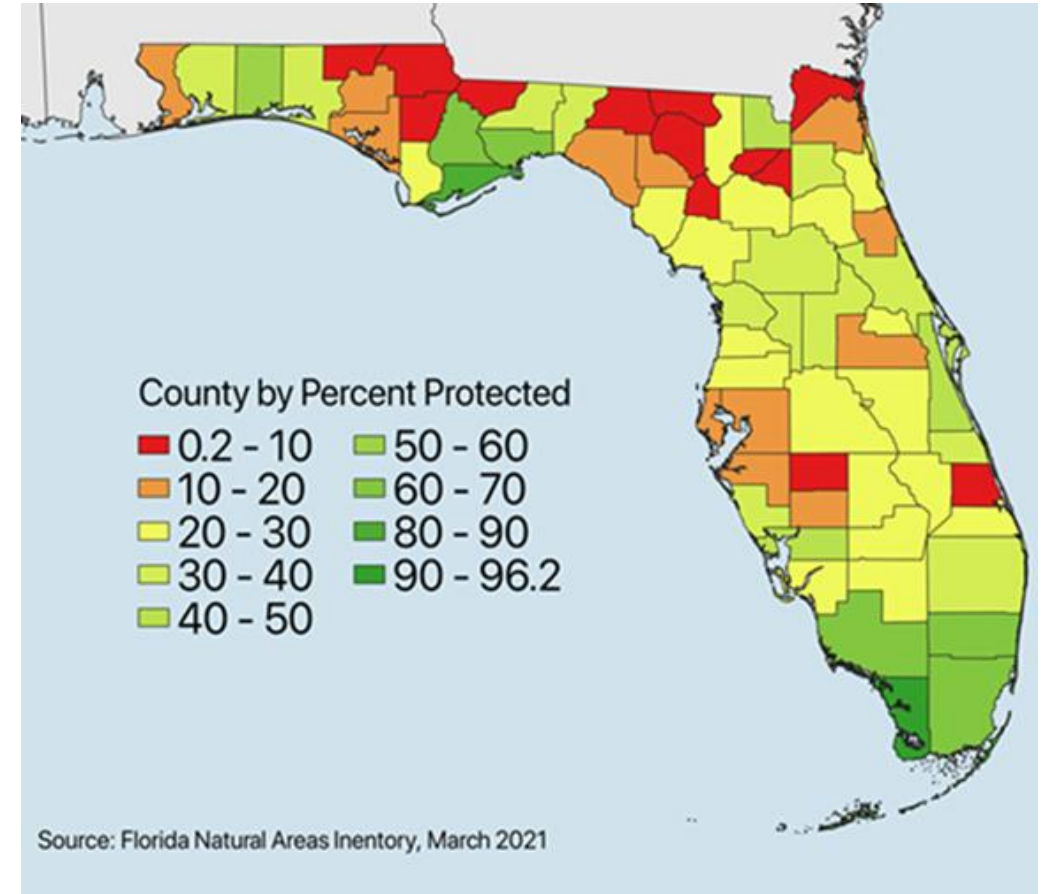


- **30x30 land protection strategy**
- **2026-2050 Comprehensive Plan update**
- **EMPOWER Coalition and Solar Leasing Project**
- **Update County Local Mitigation Strategy**
- **Forward Focus initiative**
- **Alachua Countywide Bicycle & Pedestrian Master Plan**

# The 30 X 30 Plan



- Protecting 30% of land and water by 2030
- “the **minimum** commitment to protect essential ecosystem services and buffer against the worst impacts of climate change”



# The 30 X 30 Plan

- **Protecting 30% of land and water by 2030**
- **43,000 more acres needed!**

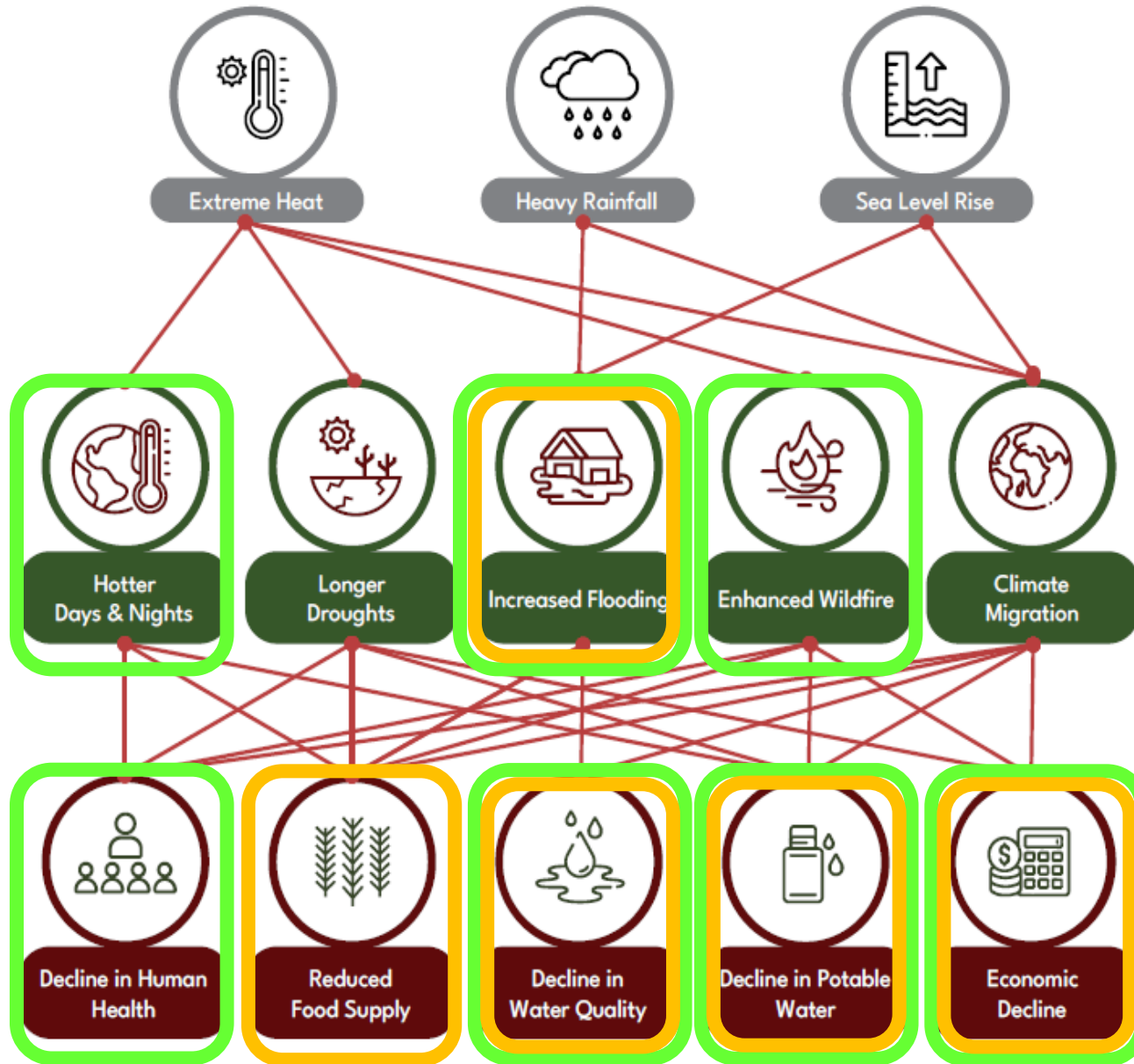


- **Efforts include:**
  - Corridors
  - Wetlands and Water Resources
  - Imperiled Species and Sites
  - Diverse Habitats
  - **Agricultural Land Protection**



# Global Temperature Increase

Threats  
Vulnerabilities  
Societal Impacts



**Land Conservation Reduces Climate Vulnerability!**

# Comprehensive Plan



**Objectives, policies, and strategies related to addressing climate will be added to the update to the Alachua County Comprehensive Plan as part of the 2026-2050 Plan update.**

**This process will start in 2025.**



# EMPOWER Coalition and Solar Leasing



Spearheaded by the Alachua County NAACP, the EMPOWER coalition seeks to install solar on institutional structures and invest the energy savings into community weatherization efforts.



# Local Mitigation Strategy



**WHEN DISASTER STRIKES  
STAY INFORMED**

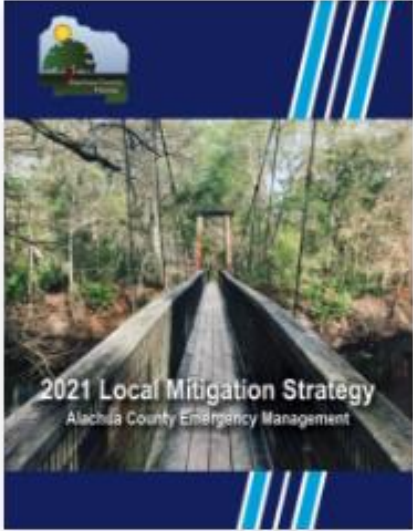
---

Text "ALACHUA" to 888777  
to receive real-time County updates  
during a large-scale incident or emergency



**Alachua County Emergency Management**  
17K followers • 80 following

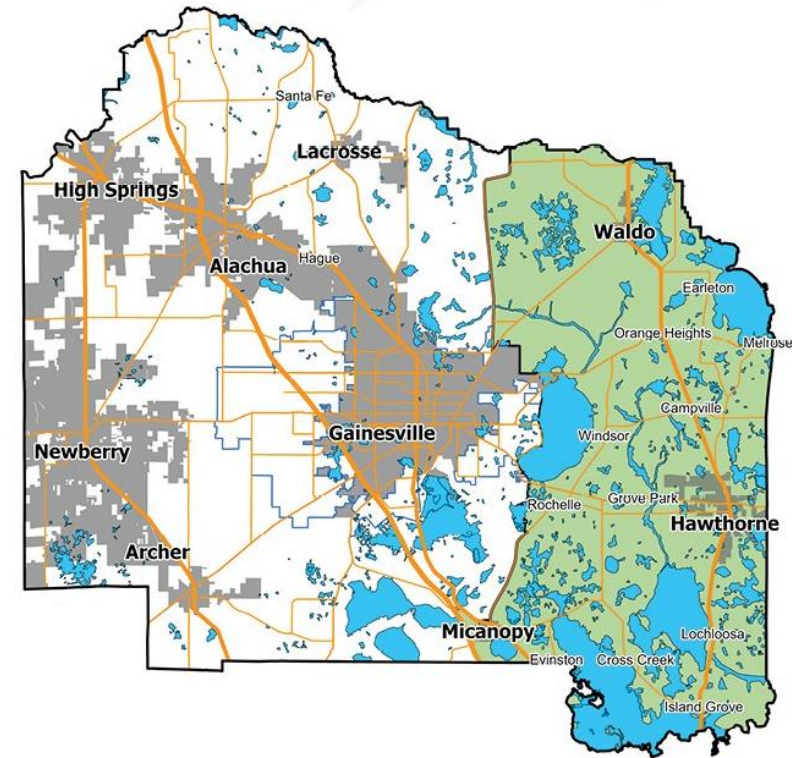
[Sign Up](#) [Message](#) [Follow](#)



# Forward Focus



A three-year initiative to enhance quality of life, boost economic opportunities and address community needs in the eastern part of the county.



# Bicycle & Pedestrian Master Plan



## PUBLIC OPEN HOUSE



### ALACHUA COUNTYWIDE BICYCLE & PEDESTRIAN MASTER PLAN



### SAFE STREETS AND ROADS FOR ALL ACTION PLAN

Alachua County is starting two planning efforts to improve walking, biking, and driving throughout the county.

We need your help in shaping the future of Alachua County! Please stop by our open house to learn more about the plans and share your thoughts.

When: November 13, 2024 – 4:00 to 6:00 PM

Where: Harn Museum of Art – Auditorium  
3259 Hull Rd, Gainesville, FL 32608



BikePedMasterPlan

If you are unable to attend the in-person meeting, or want more information, please visit the project websites

[tinyurl.com/BikePedMasterPlan](https://tinyurl.com/BikePedMasterPlan) • [tinyurl.com/SS4AActionPlan](https://tinyurl.com/SS4AActionPlan)



SS4AActionPlan

## Alachua Countywide Bicycle & Pedestrian Master Plan and Safe Streets and Roads for All (SS4A) Action Plan

# PUBLIC OPEN HOUSE

November 13, 2024 – 4:00 to 6:00 PM

Harn Museum of Art – Auditorium  
3259 Hull Road, Gainesville, FL 32608



BikePedMasterPlan



SS4AActionPlan



SAFE STREETS AND ROADS FOR ALL ACTION PLAN

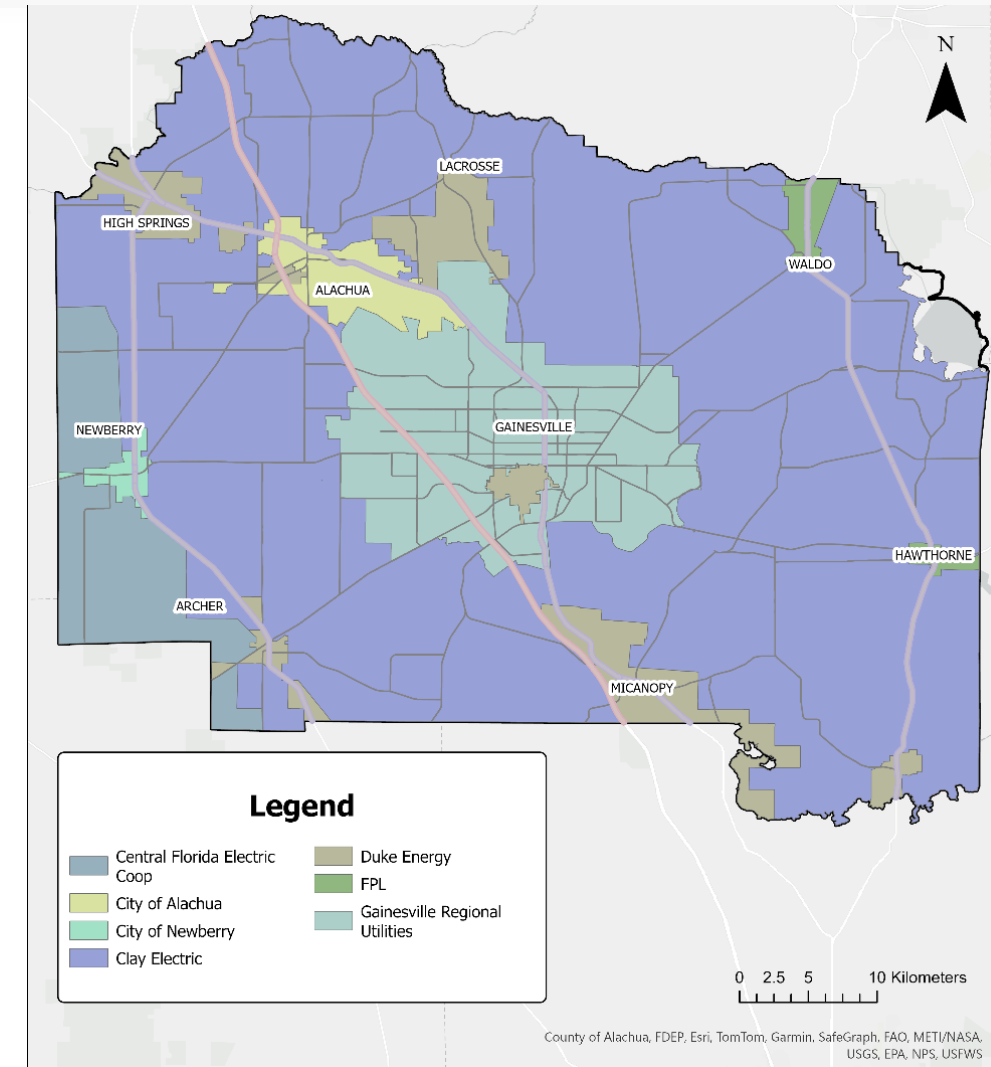
If you are unable to attend the in-person meeting, or want more information, visit the project websites  
[tinyurl.com/BikePedMasterPlan](https://tinyurl.com/BikePedMasterPlan) • [tinyurl.com/SS4AActionPlan](https://tinyurl.com/SS4AActionPlan)

# Energy Action Items



- Practice energy conservation
- Maximize energy efficiency
- Promote & invest in renewable energy production

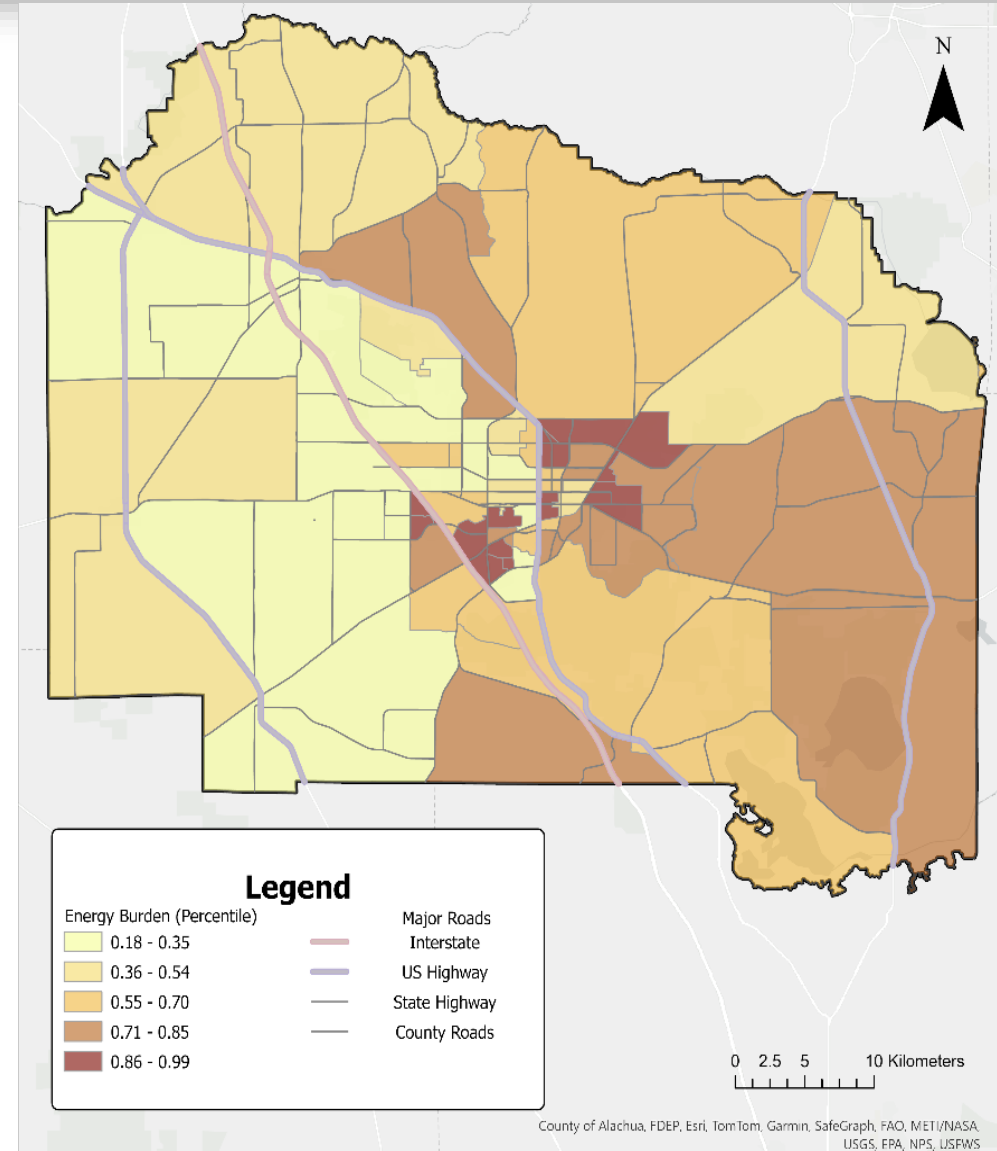
*The County's goal is that 100% of energy purchased/produced for County facilities be from solar sources by 2030, with an interim target of 50% by 2025.*



# Equity & Energy



- **Energy burden is when a household is spending over 6% of their income on energy bills.**
- **Severe energy burden is when a household spends over 10%.**





# Equity & Energy



## Resource List

Name	Description	Phone	Website
<b>Alachua County Energy Efficiency Program</b>	Help lower utility bills for Alachua County residents by creating a fund to improve the energy efficiency of rental units.	(352) 450-4965	 alachuacounty.us
<b>Alachua County Habitat for Humanity</b>	New Homes for qualified applicants, critical home repair.	(352) 378-4663	 alachuahabitat.org
<b>Alachua County Housing Program Division</b>	Home repairs via CHIP Program; roof, HVAC, plumbing, electrical, accessibility repairs; moderate or major housing rehabilitation.	(352) 337-6240	 alachuacounty.us
<b>Central Florida Community Action Agency</b>	Weatherization assistance program, HVAC, LIHEAP, help families become self-sufficient.	(352) 373-7667	 cfcaa.org
<b>City of Gainesville Housing Division</b>	Program addressing electrical, plumbing, roof, HVAC, etc., as well as retrofits for those with special needs.	(352) 334-5026	 gainesvillefl.gov
<b>Community Weatherization Coalition</b>	DIY or energy coach-led comprehensive home energy tune-up to reduce utility bills for homeowners and renters.	(352) 450-4965	 communityweatherization.org
<b>Gainesville Regional Utilities LEEP<sup>plus</sup> Program</b>	Energy efficiency upgrades (insulation, HVAC, air sealing, water heater, ductwork) for eligible GRU homeowners	(352) 393-1460	 gru.com
<b>Rebuilding Together North Central Florida</b>	Critical home repair, home modification/accessibility for seniors, weatherization, plumbing, electrical.	(352) 373-2573	 rebuildingtogetherncf.org
<b>USDA Single-Family Housing Programs, Rural Development</b>	Single family housing programs, home repair loans and grants in eligible rural areas.	(352) 338-3400	 rd.usda.gov
<b>United Way 2-1-1 Helpline</b>	Resources for emergency shelters, food assistance, elder services, youth and childcare issues, emergency financial assistance and more.	2-1-1 *Operates 24/7	 211.org



### Home weatherization programs are available.

Scan this QR code to find more information about what each program offers.



Stay updated and follow us on social media!

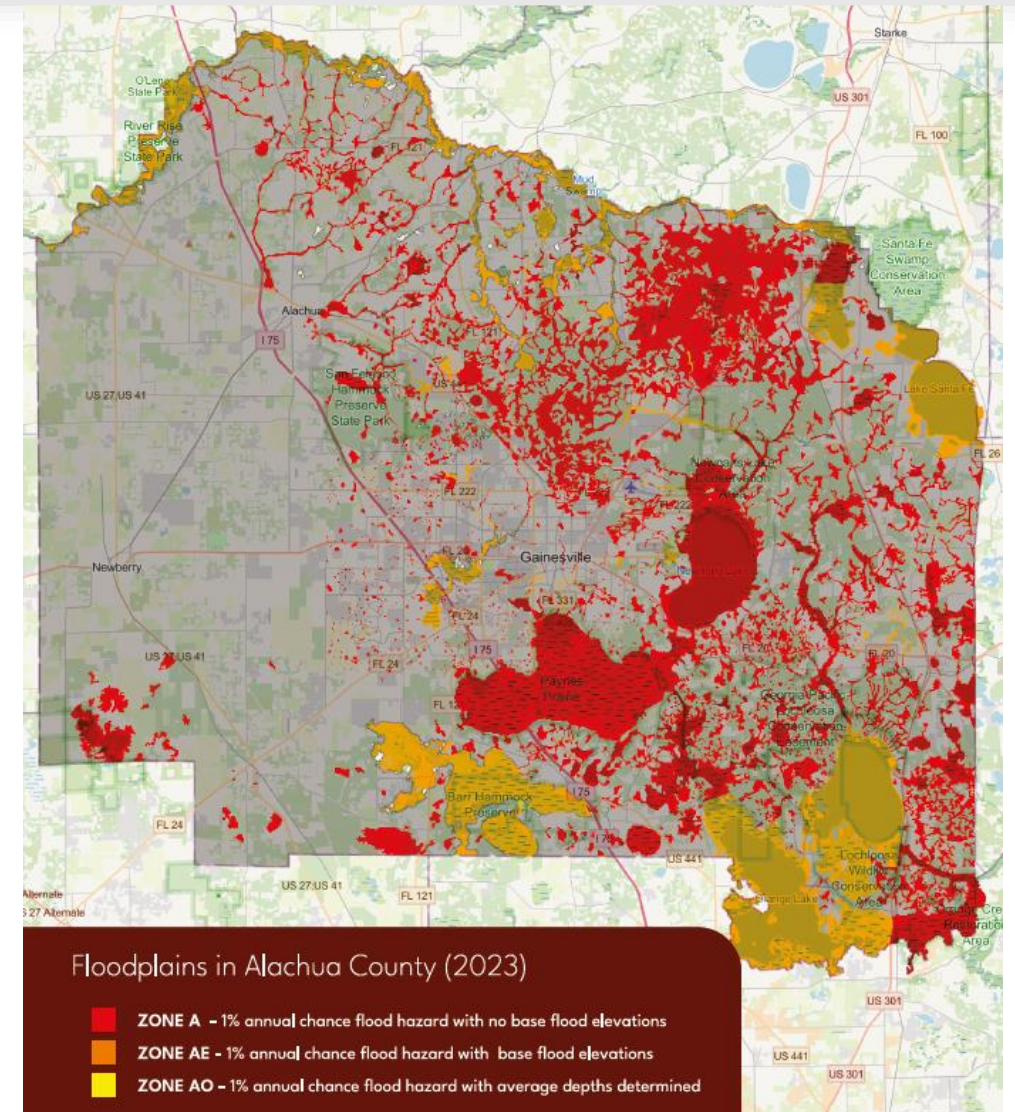


- GRU LEEP+
- Alachua County Energy Efficiency Program
- Rebuilding Together NCF - Critical Home Repair
- Rebuilding Together NCF - Safe at Home
- CWC Home Energy Tune-up Program
- Rebuilding Together NCF - Emergency Home Repair
- USDA Single-Family Housing Repair Loans & Grants in FL

# Effects of Extreme Weather



- **Property damage**
- **Damage to critical infrastructure (hospitals, roads, wastewater...)**
- **Economic losses**
- **Displacement**
- **Public health and safety**



# Flooding Action Items

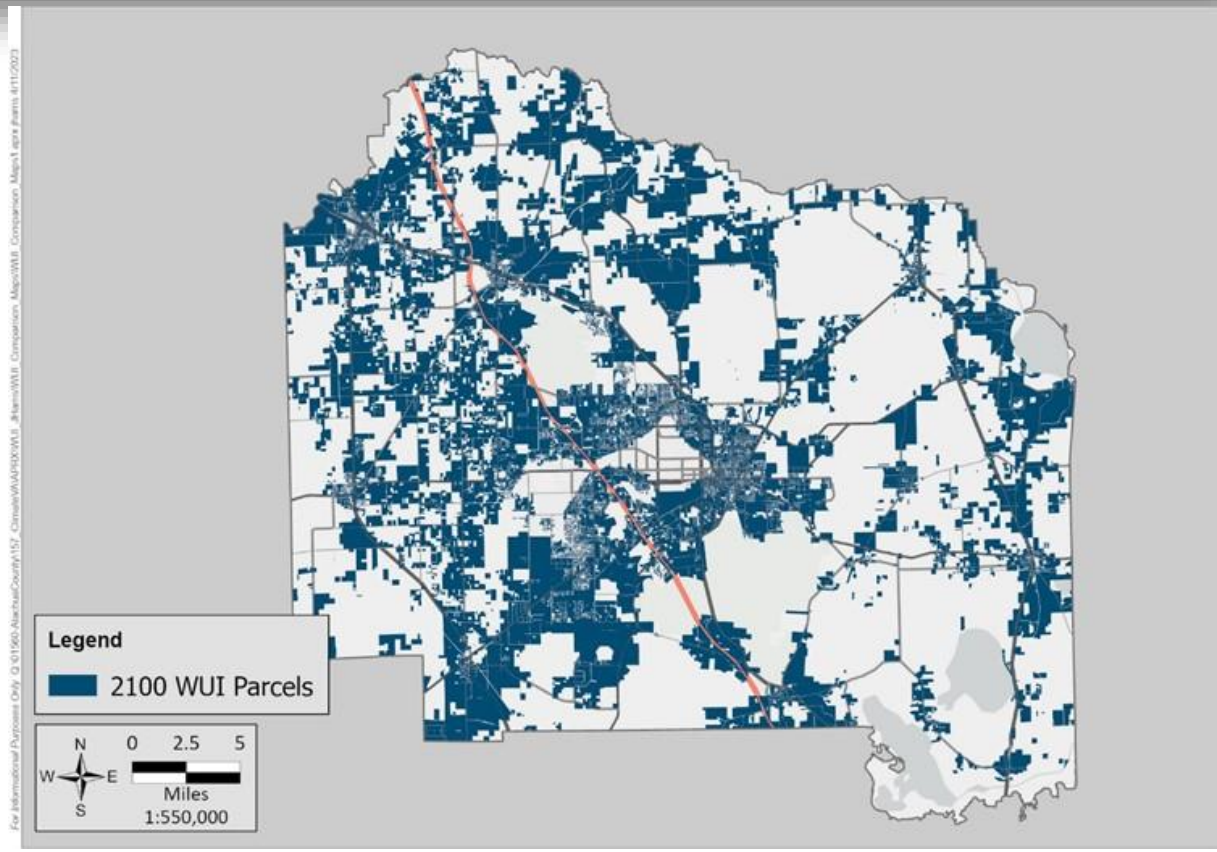


- **Increase protection to floodplains**
- **Update stormwater strategies**
- **Avoid building in floodplain**
- **Increase buffers to floodplains in large watersheds**
- **Promote multifunctional landscapes and Low Impact Development strategies**
- **Protect critical infrastructure**

# Droughts and Wildfire Action Items



- Support prescribed burning of Natural Areas
- Proper management of silviculture lands
- Firewise landscaping strategies
- Control invasive species
- Strong coordination between State agencies, local fire departments, and land managers



Some potential impacts seen during a drought include:

- Reduced Agricultural Production
- Decrease of Local Plants and Animals
- Increase in Sinkholes
- Increase in Wildfires
- Water Use Restrictions and Emergencies

# Extreme Temperatures Action Items

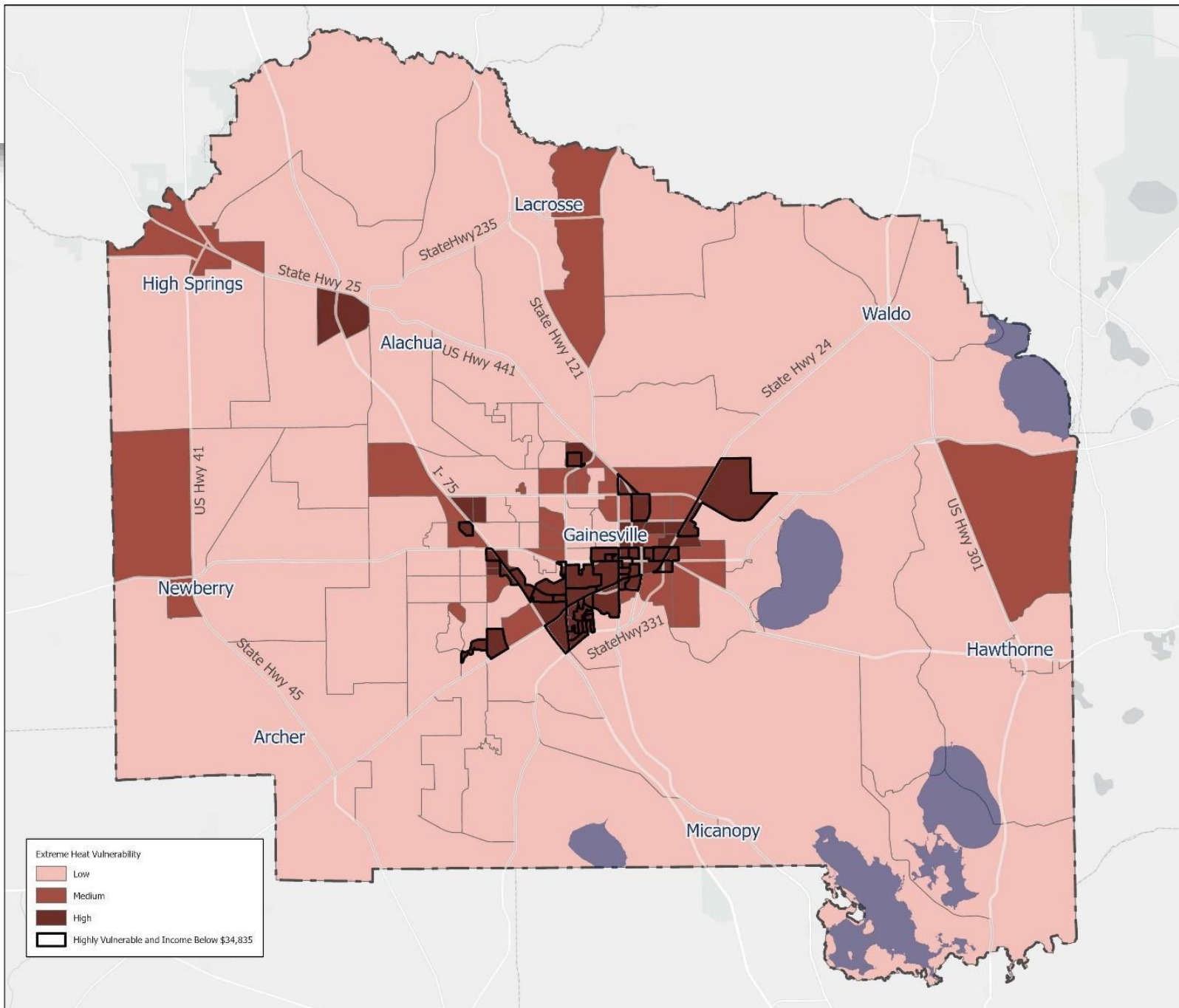


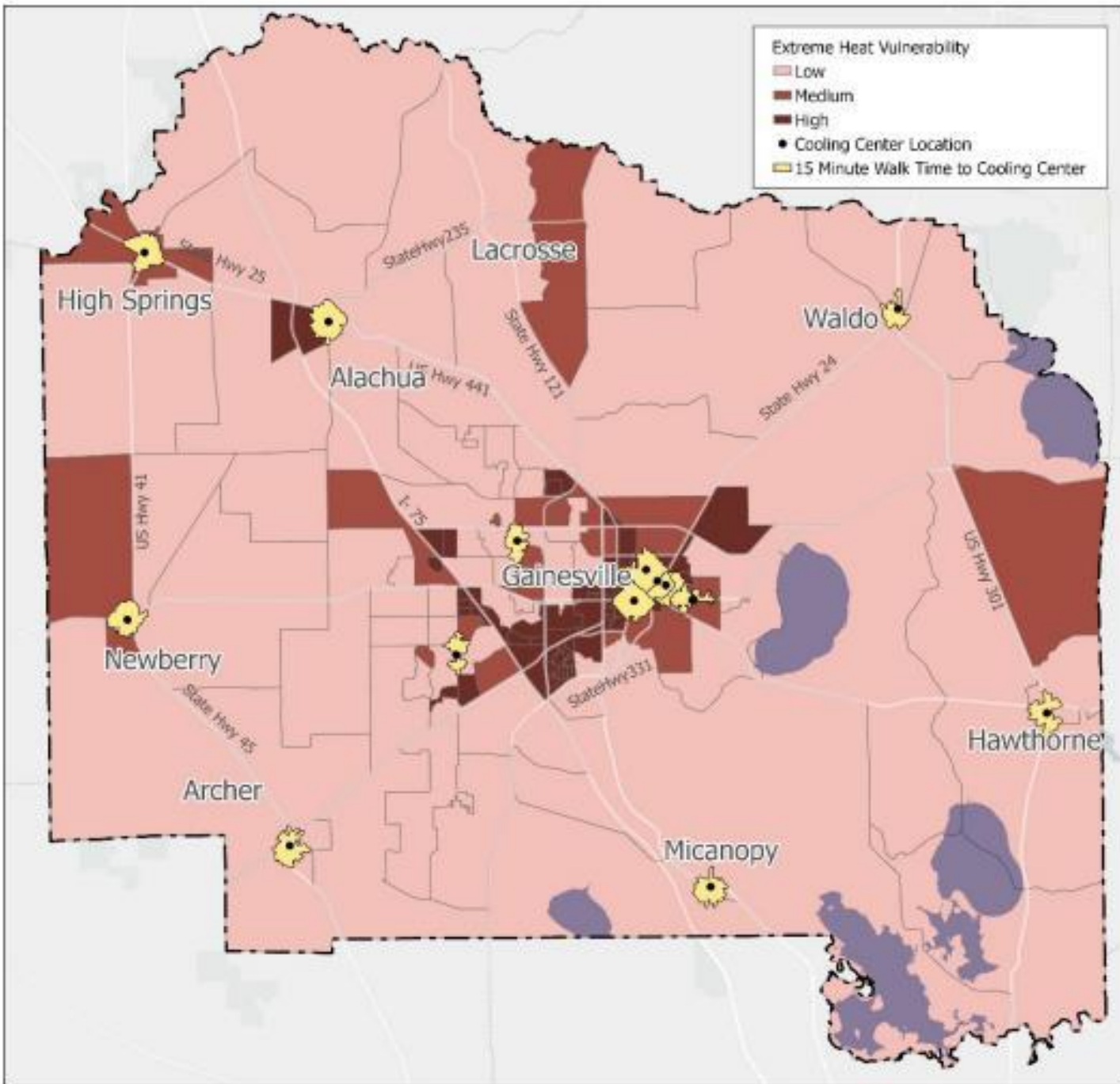
- **Adopt an Extreme Temperature Plan**
- **Support Best Management Practices for outdoor workers**
- **Reduce heat island effect:**
  - **Strong tree canopy and planting strategies**
  - **Light and impervious pavement**
  - **Covered parking**
- **Adjust times for outdoor games and events**
- **Protect forested habitats and wetlands**
- **Increase cooling center locations and hours**





# Extreme Temperatures





# Cooling Stations

## BEAT THE HEAT

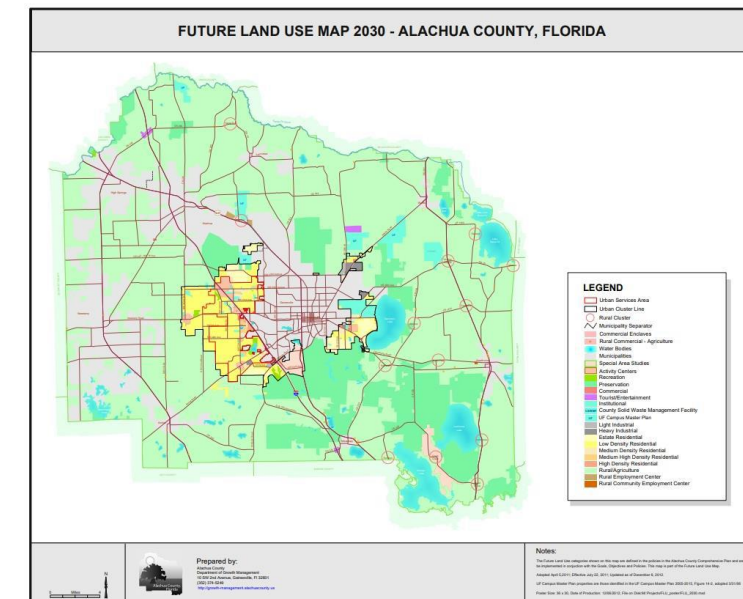
<p><b>DRESS LIGHT</b> Wear loose-fitting clothing</p>	<p><b>STAY COOL</b> Stay somewhere with air-conditioning</p>
<p><b>LEARN</b> Stay informed and learn how to prevent, recognize and treat heat-related illnesses</p>	<p><b>EAT LIGHT</b> Avoid hot foods and heavy meals</p>
<p><b>STAY SAFE</b> Never leave infants, pets or children in parked cars</p>	<p><b>USE SUNSCREEN</b> Use sunscreen with SPF 15+ when going outside</p>
<p><b>STAY HYDRATED</b> Stay hydrated but avoid alcohol and liquids with large amounts of sugar</p>	<p><b>COOL DOWN</b> Take a cool shower or bath</p>

**NAACP**  
FLORIDA STATE CONFERENCE

# Land Use and Transportation Action Items



- Urban & rural transportation mobility districts
- Electric vehicles & stations
- Promote safe bike & pedestrian networks
- Climate-conscious development





# **Climate-Conscious Development Strategies**



- **Solar ready buildings and homes**
- **Florida weather-based designs (screen porches, light roofs and surfaces, EV charger hookups...)**
- **Energy & Water Star Certification programs**
- **Multifunctional open spaces (parks and fields designed to take critical storm runoff...)**
- **Move away from permanently irrigated landscapes**
- **Promote community gardens**

# Water Resources Action Items

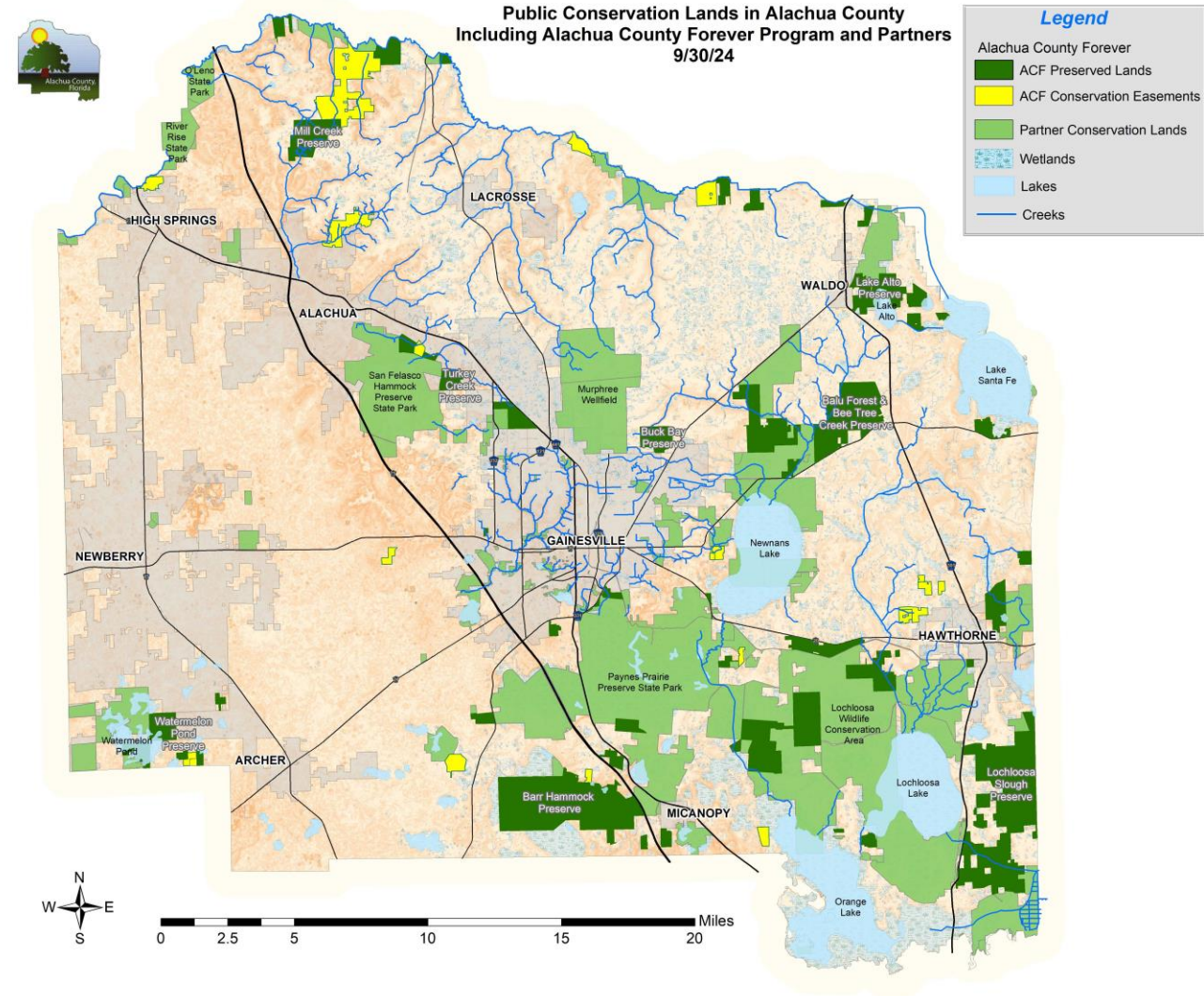
- Promote resilient landscapes
- Improve consumptive use permitting process
- Protect and improve wastewater and water supply infrastructure
- Increase aquifer recharge
- Improve new and existing development requirements



# Natural Resources Action Items



- Adopt Forest Management Plan
- Improve tree protection and identify canopy target goal
- Protect wetland and floodplains countywide
- Protect Conservation Lands (30x30 Plan)
- Improve new and existing development and landscaping requirements
- Support sustainable and regenerative ag practices



# Impacts of Climate Change on Mental Health



- Acute/Chronic/Indirect effects
- Feelings of loss/hopelessness
- Eco-anxiety/Climate anxiety
- PTSD/ASD
- Domestic Violence/Aggression
- Suicide
- Substance Abuse



**Crisis Line:**

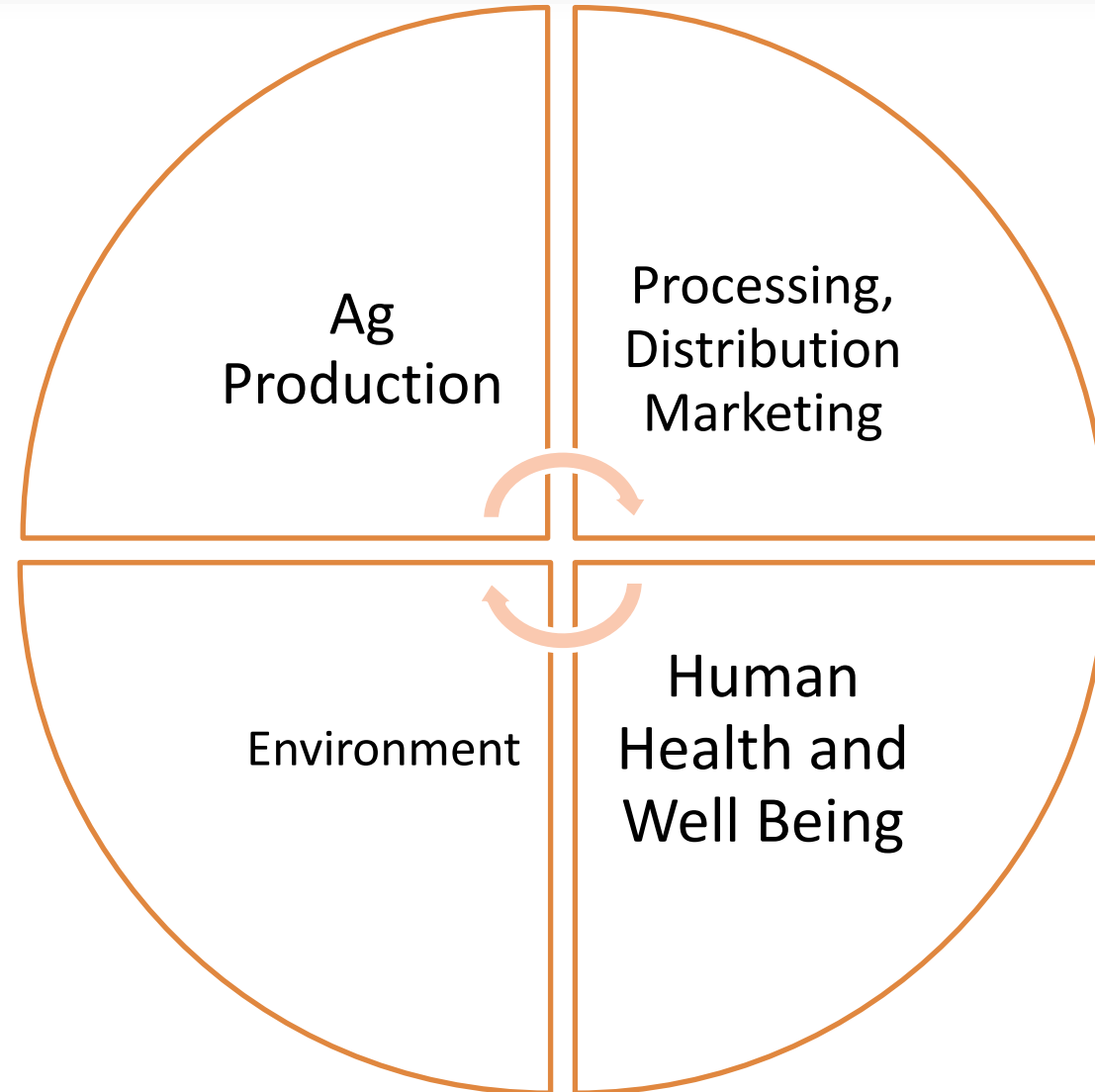
**352-264-6789**

# Mental Health Action Items



- **Provide ongoing training for staff and volunteers on the effects of climate change**
- **Join organizations who are conducting outreach related to climate change**
- **Maintain a systems approach to understanding how migration is impacting infrastructure needs**
- **Be part of the conversation around houselessness and mental health impacts**
- **Maintain a list of local resources that address climate fears and impacts**

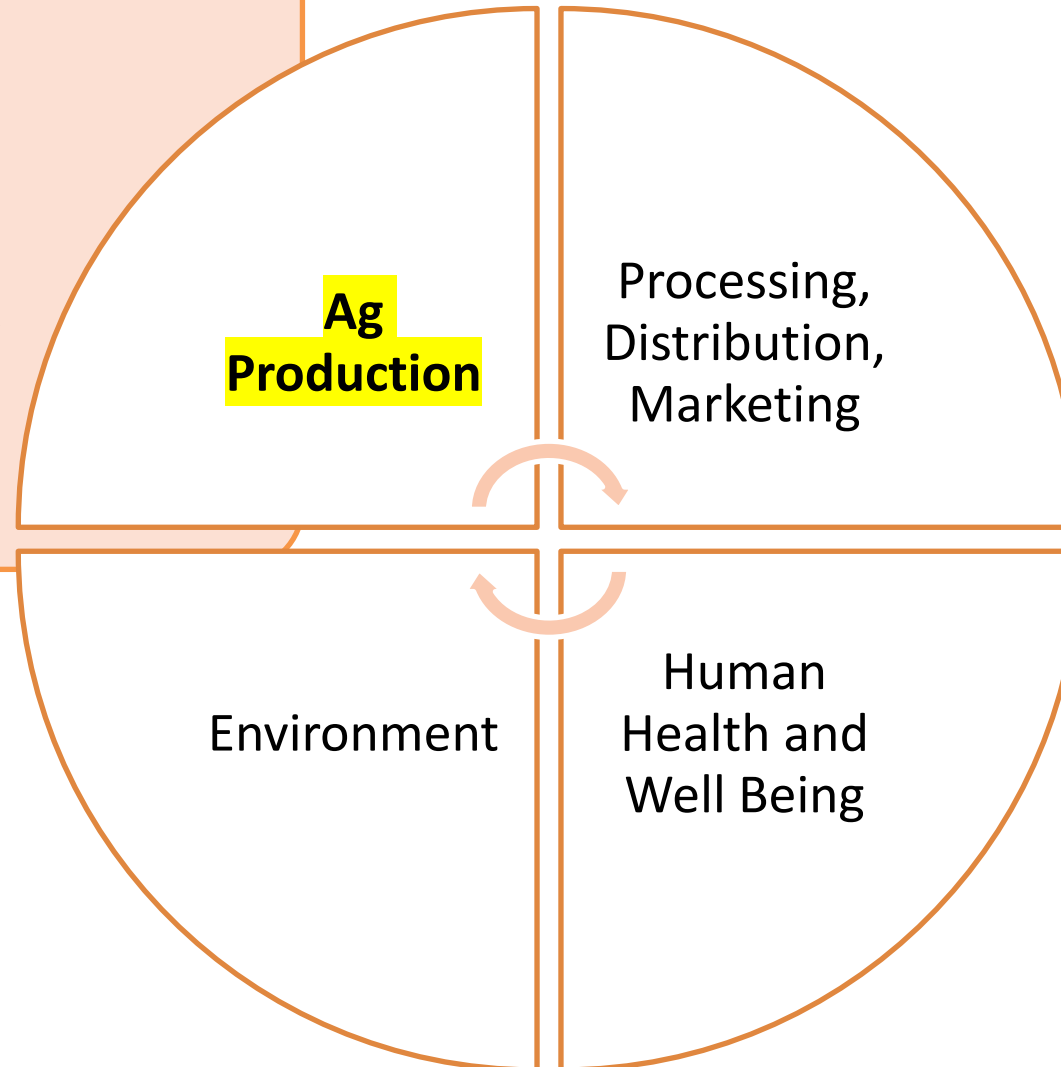
# Agriculture and Food Security Action Items



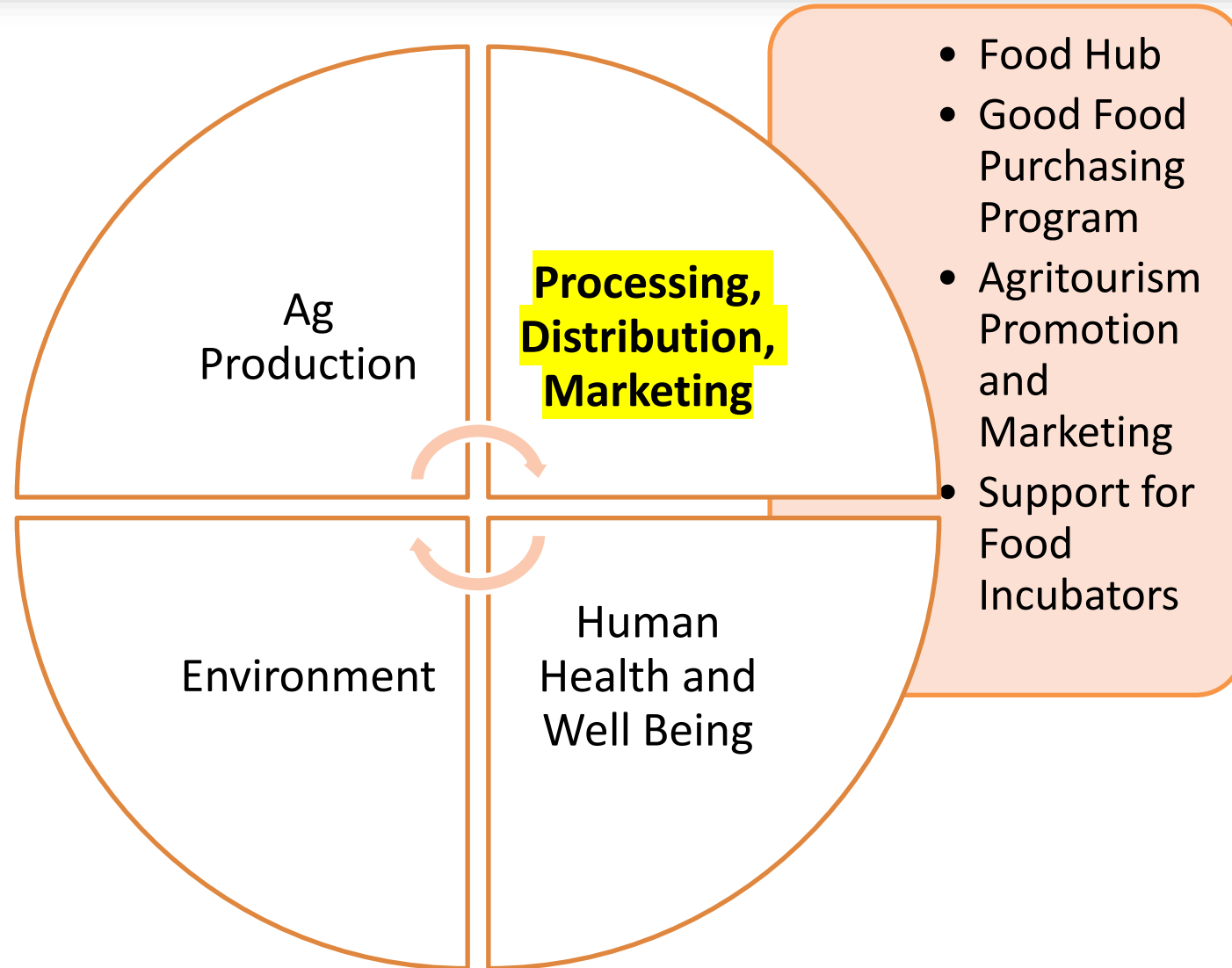
# Agriculture and Food Security Action Items



- Small Farmer Grants
- Regional Food System Map
- Small Farmer Food Safety Certification
- Community Gardens

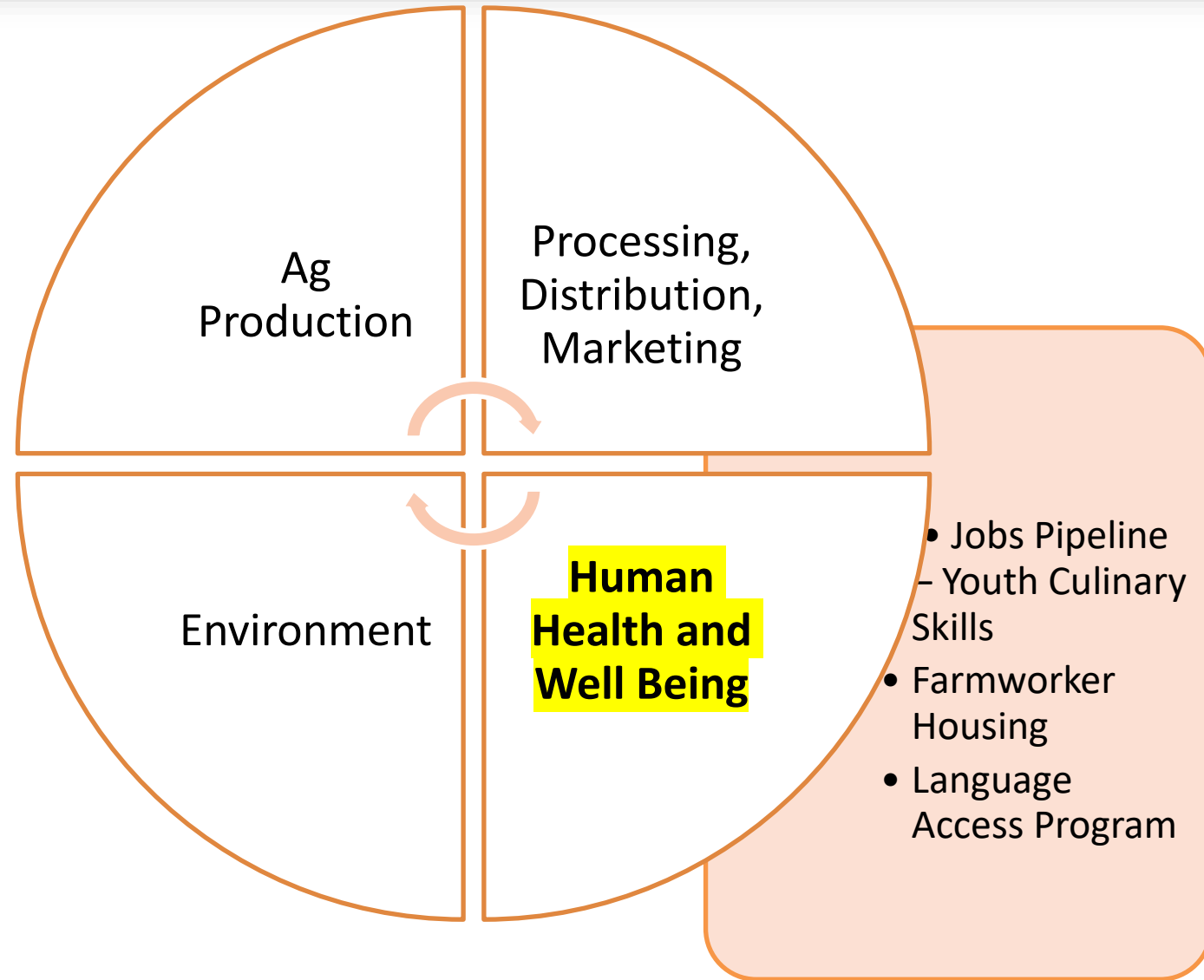


# Agriculture and Food Security Action Items

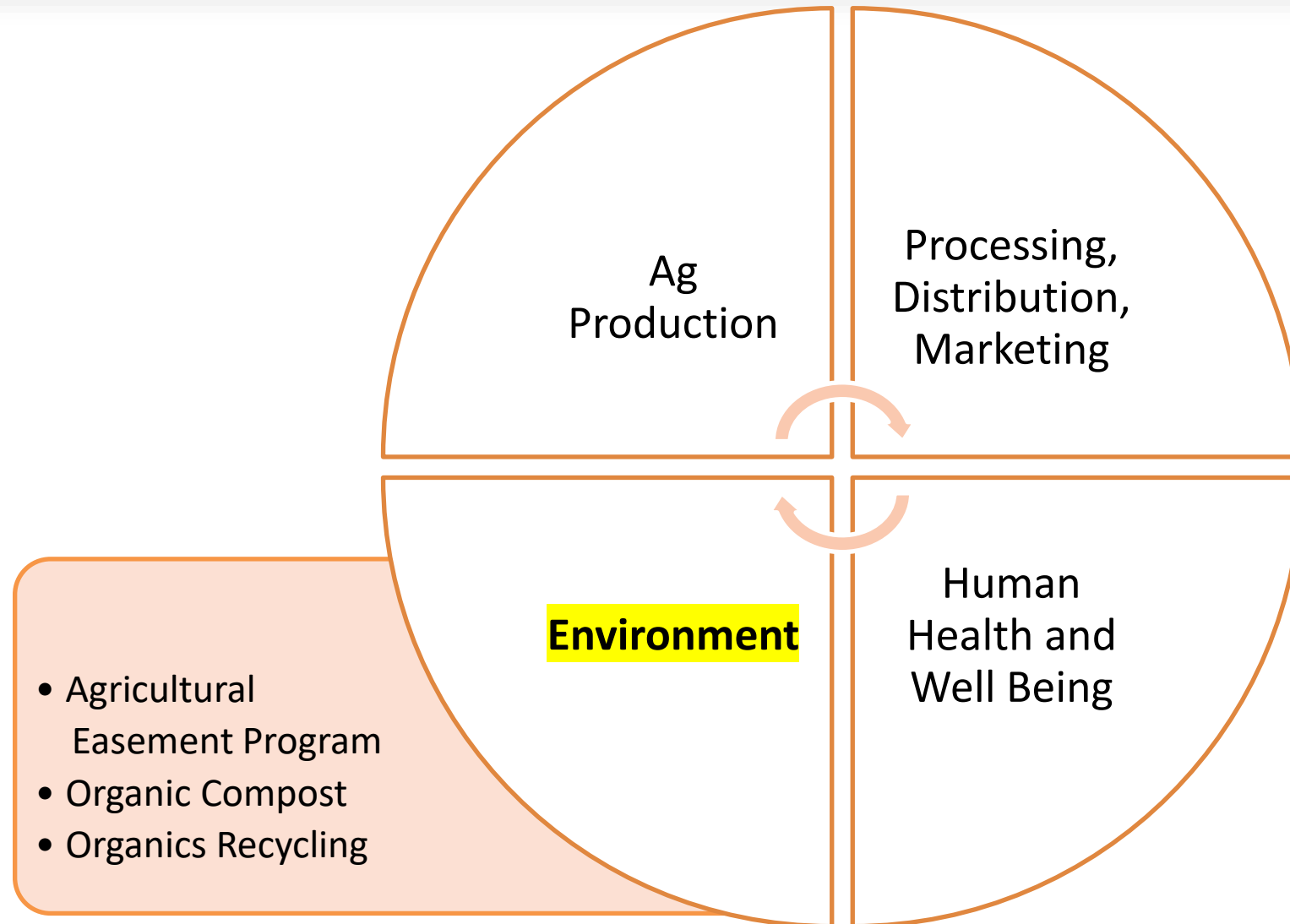




# Agriculture and Food Security Action Items



# Agriculture and Food Security Action Items



# Waste Management



LEVEDA BROWN ENVIRONMENTAL PARK



# Waste Management Action Items



- **Decrease solid waste generation to 4 lbs/per person by 2040**
- **Divert 90% of waste from landfills by 2040**
- **Increase recycling rates to 65% by 2030**
- **decrease recycling contamination to 6.5% by 2030**

# Next Steps



- **Collect feedback and suggestions from Summit**
- **Finalize draft chapters**
- **Present chapters to the Citizen Climate Advisory Committee Jan – April 2025**
- **Bring updated drafts to the County Commission for review and final adoption in Fall of 2025.**

# Thank you!



- **Alachua County Board of County Commissioners**
- **Our Guest Speakers**
- **Katharine Allee @ Event & Systems Design**
- **Santa Fe College**
- **Custom Caterers**
- **Climate Summit Planning Teams**
- **Climate Planning Committee**
- **Citizen Climate Advisory Committee**
- **Thompson Earth Systems Institute – Florida Museum of Natural History**
- **Our Non-Profit Partners & Exhibitors**

City of  
**Gainesville**

# **FROM VISION TO ACTION:** **Climate Resilience Action Plan**

**Jennie Ford, Environmental  
Coordinator**





**2021**  
GHG Inventory

**2023** JonesEdmunds  
Vulnerability Assessment

**2021** RACE TO ZERO



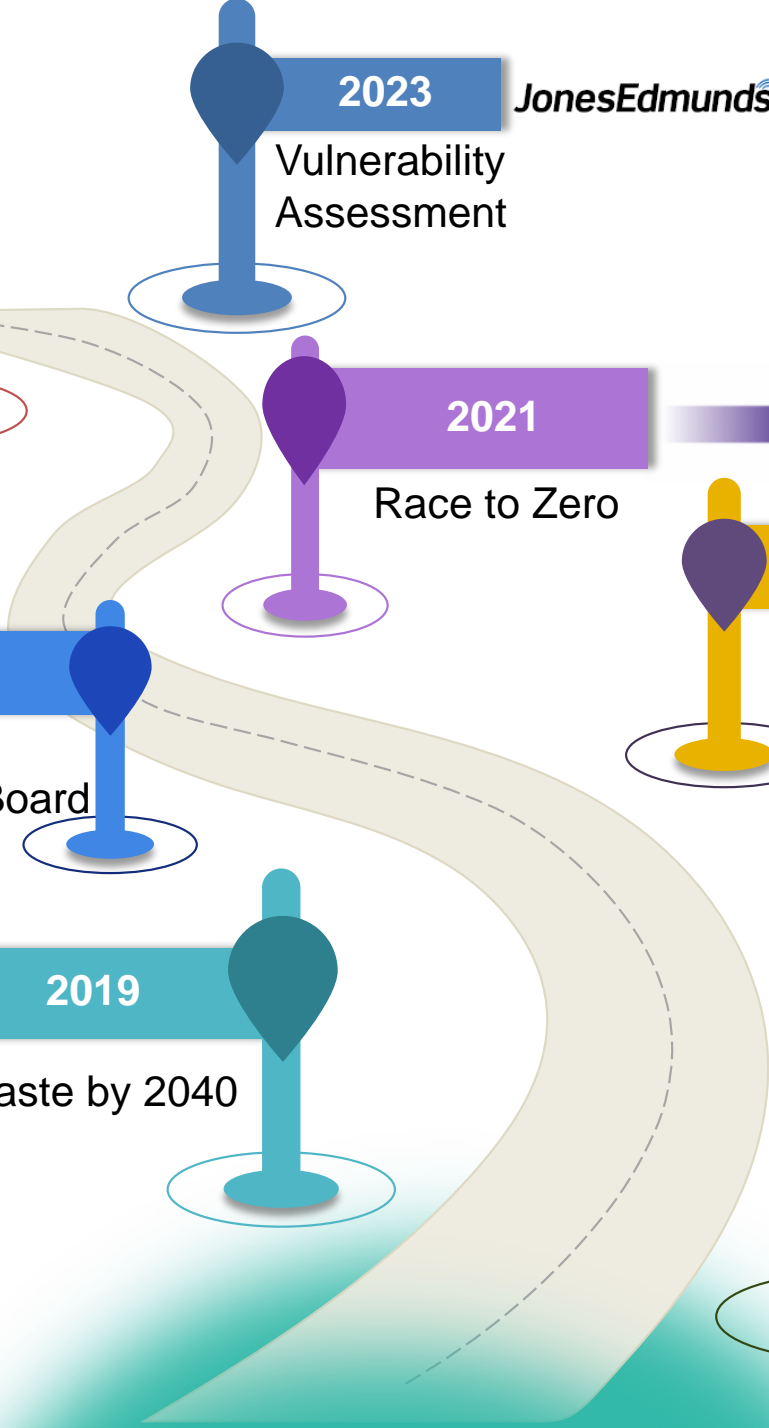
**2020**  
Joint Water and Climate Policy Board

**2019**  
Gainesville Declares State of Emergency with Climate Proclamation

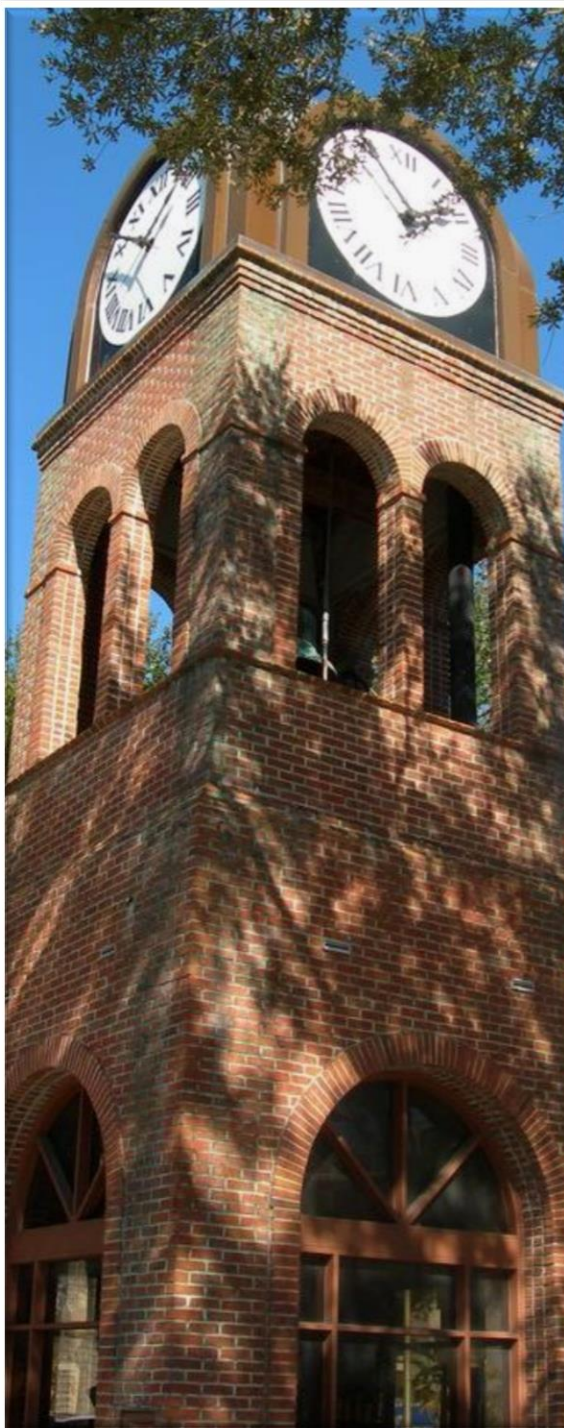


**2019**  
Zero Waste by 2040

**2018**  
Net Zero GHG by 2045







## City of Gainesville, FL

2019 Inventory of  
Community and  
Government Operations  
Greenhouse Gas Emissions

August, 2021

Produced by ICLEI - Local Governments  
for Sustainability USA

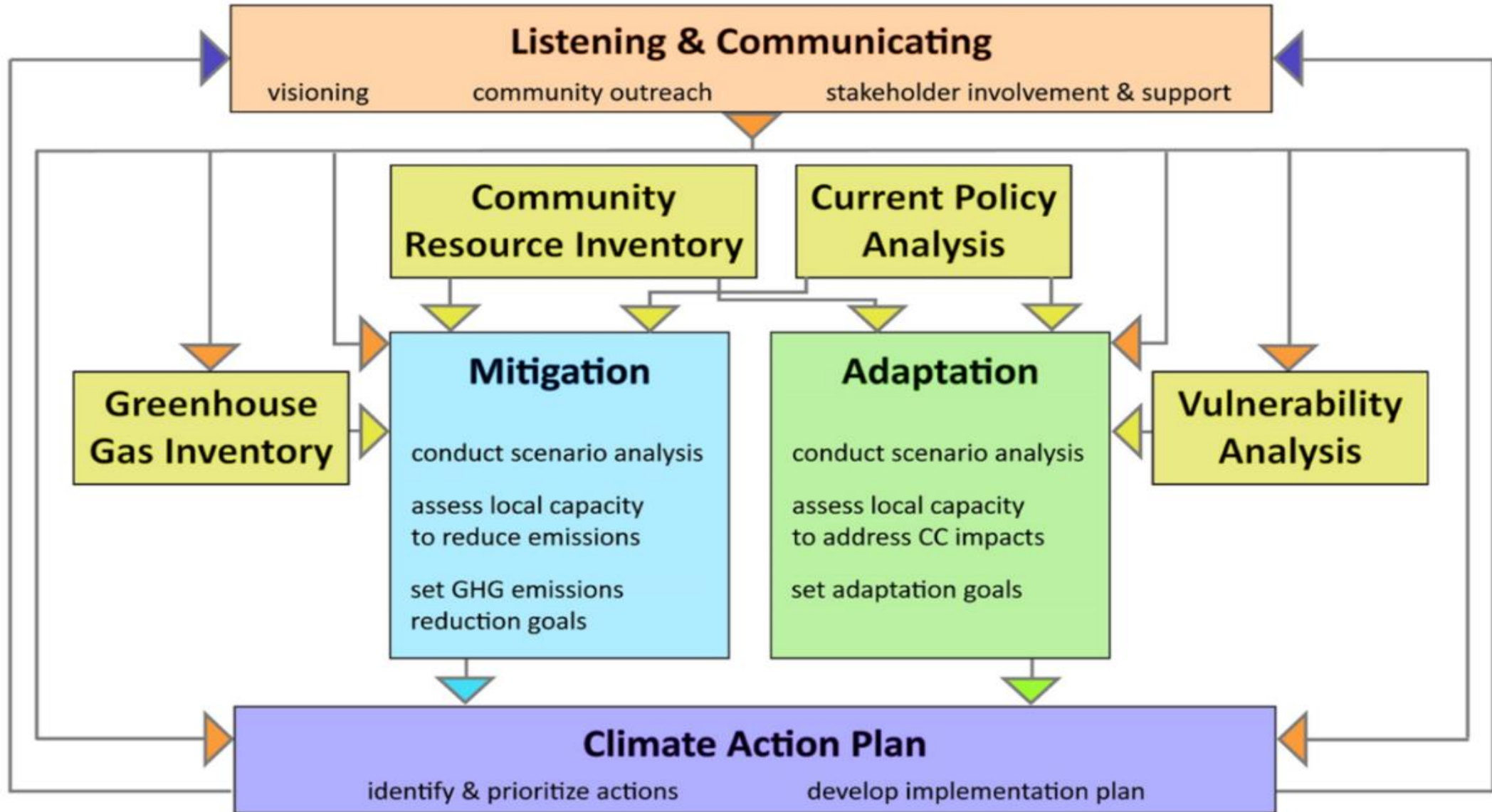
# City of Gainesville

FloodWise Communities Vulnerability Assessment  
for the  
City of Gainesville, Florida



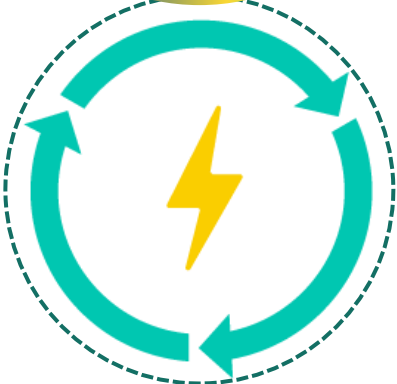
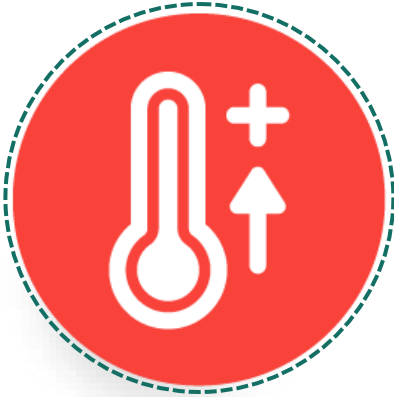
Prepared by City of Gainesville  
September 2022

# Climate Action Planning Process: Components



\*adapted from "Guiding Principles for City Climate Action Planning", UN Habitat for a Better Urban Future

# City Climate Action Plan Chapters



Mitigation

Adaptation





# SUSTAINABLE DEVELOPMENT GOALS

17 GOALS TO TRANSFORM OUR WORLD

<b>1</b> NO POVERTY 	<b>2</b> ZERO HUNGER 	<b>3</b> GOOD HEALTH AND WELL-BEING 	<b>4</b> QUALITY EDUCATION 	<b>5</b> GENDER EQUALITY 	<b>6</b> CLEAN WATER AND SANITATION 
<b>7</b> AFFORDABLE AND CLEAN ENERGY 	<b>8</b> DECENT WORK AND ECONOMIC GROWTH 	<b>9</b> INDUSTRY, INNOVATION AND INFRASTRUCTURE 	<b>10</b> REDUCED INEQUALITIES 	<b>11</b> SUSTAINABLE CITIES AND COMMUNITIES 	<b>12</b> RESPONSIBLE CONSUMPTION AND PRODUCTION 
<b>13</b> CLIMATE ACTION 	<b>14</b> LIFE BELOW WATER 	<b>15</b> LIFE ON LAND 	<b>16</b> PEACE, JUSTICE AND STRONG INSTITUTIONS 	<b>17</b> PARTNERSHIPS FOR THE GOALS 	



# Net Zero 2045

