

Newnans Lake Improvement Initiative, Phase II

Assessment of Hatchet Creek & Little Hatchet Creek Treatment Weir

Lead Project Managers:

Angelique M.K. Bochnak, Ph.D. (ECT)

Robin Hallbourg, P.G. (ACEPD)

Today's Agenda

- ⦿ Assessing conditions in Hatchet Creek
- ⦿ Little Hatchet Creek treatment weir pilot project
- ⦿ Status update on legislative request (FY2019/2020) for projects within the watershed

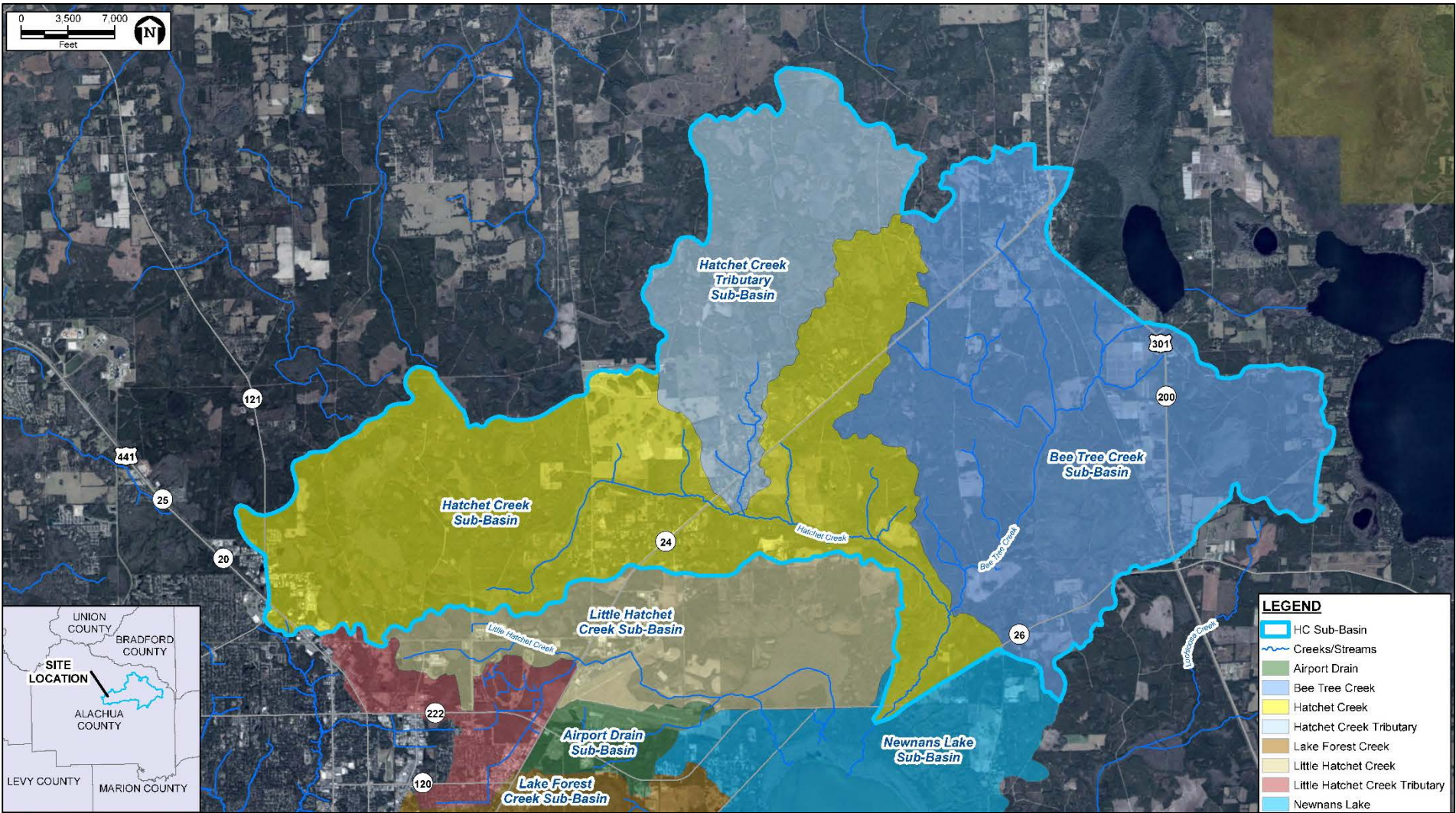
NLII: Phase II Components

- ◉ Water Quality Improvement of Hatchet Creek
- ◉ Pilot Project
- ◉ State Budget Approved: \$250,000
 - Project 1: \$192,000
 - Project 2: \$58,000

Phase II: Water Quality Improvement of Hatchet Creek

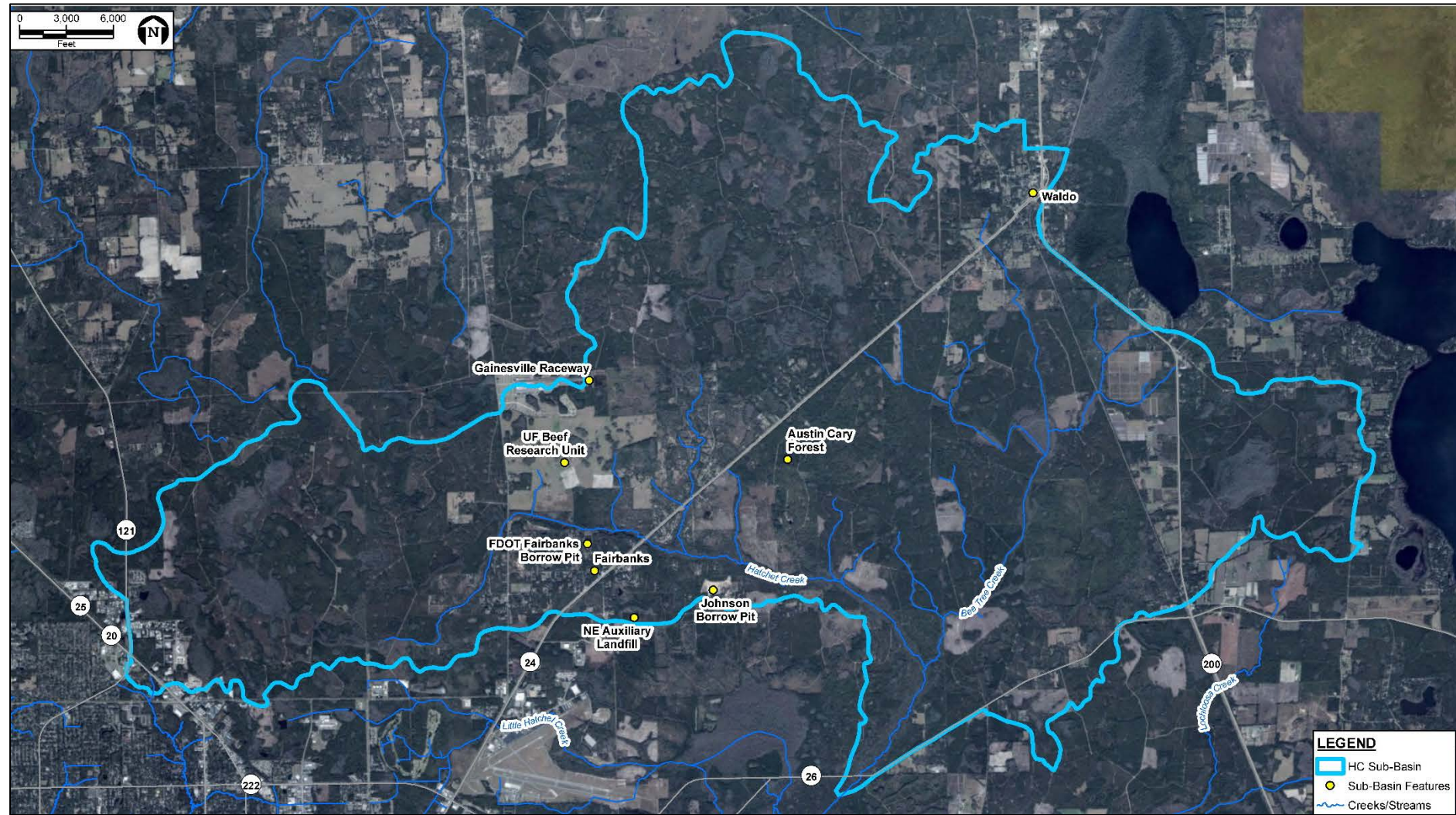
◎ Hatchet Creek Assessment

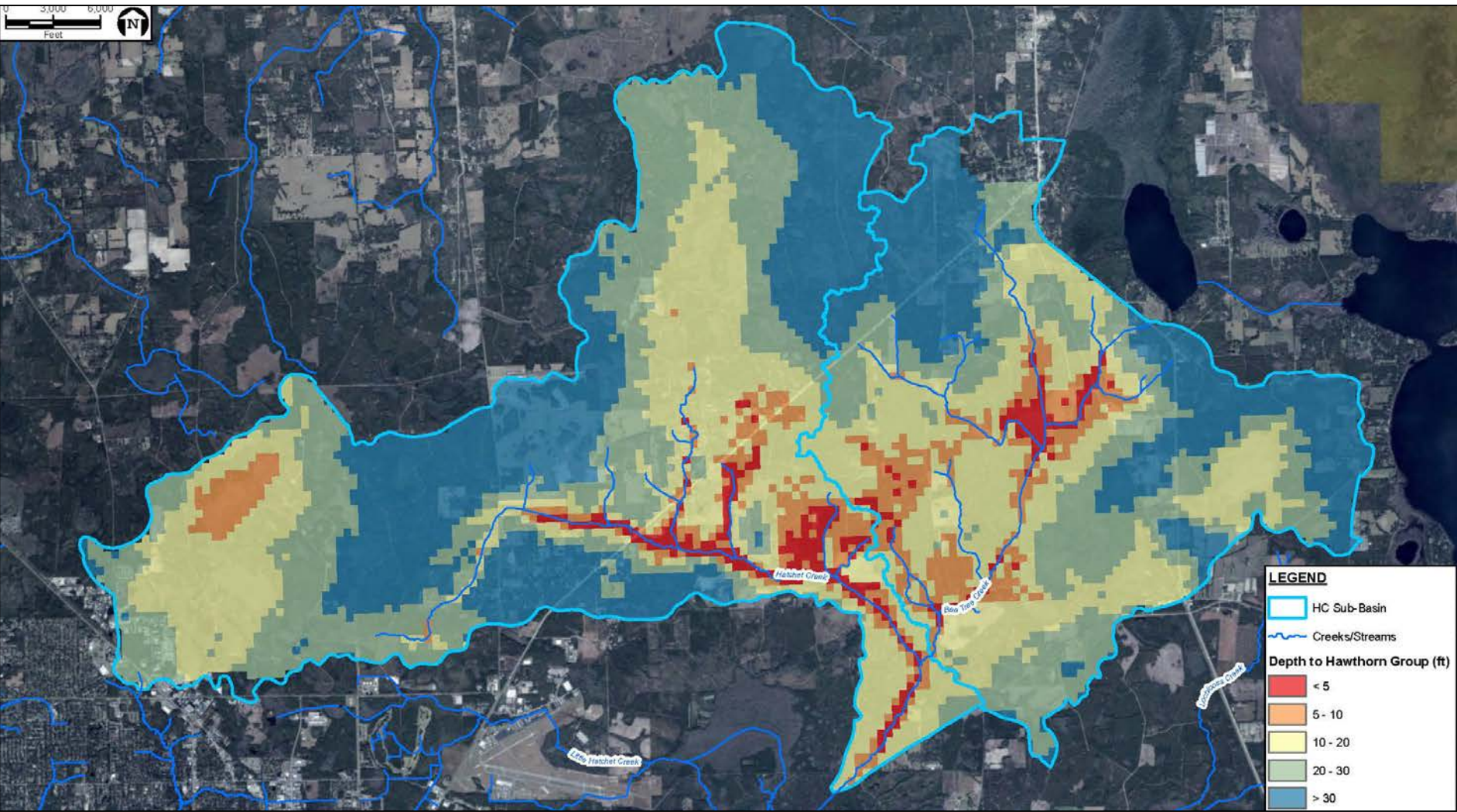
- Land Use Assessment & Site Specific BMP Development
 - Potential Nutrient Loading: IFAS Beef Research Unit & Gainesville Raceway
- Develop Restoration Design Projects
- Sediment Transport Characterization and water level loggers (start of rainy season 2019)

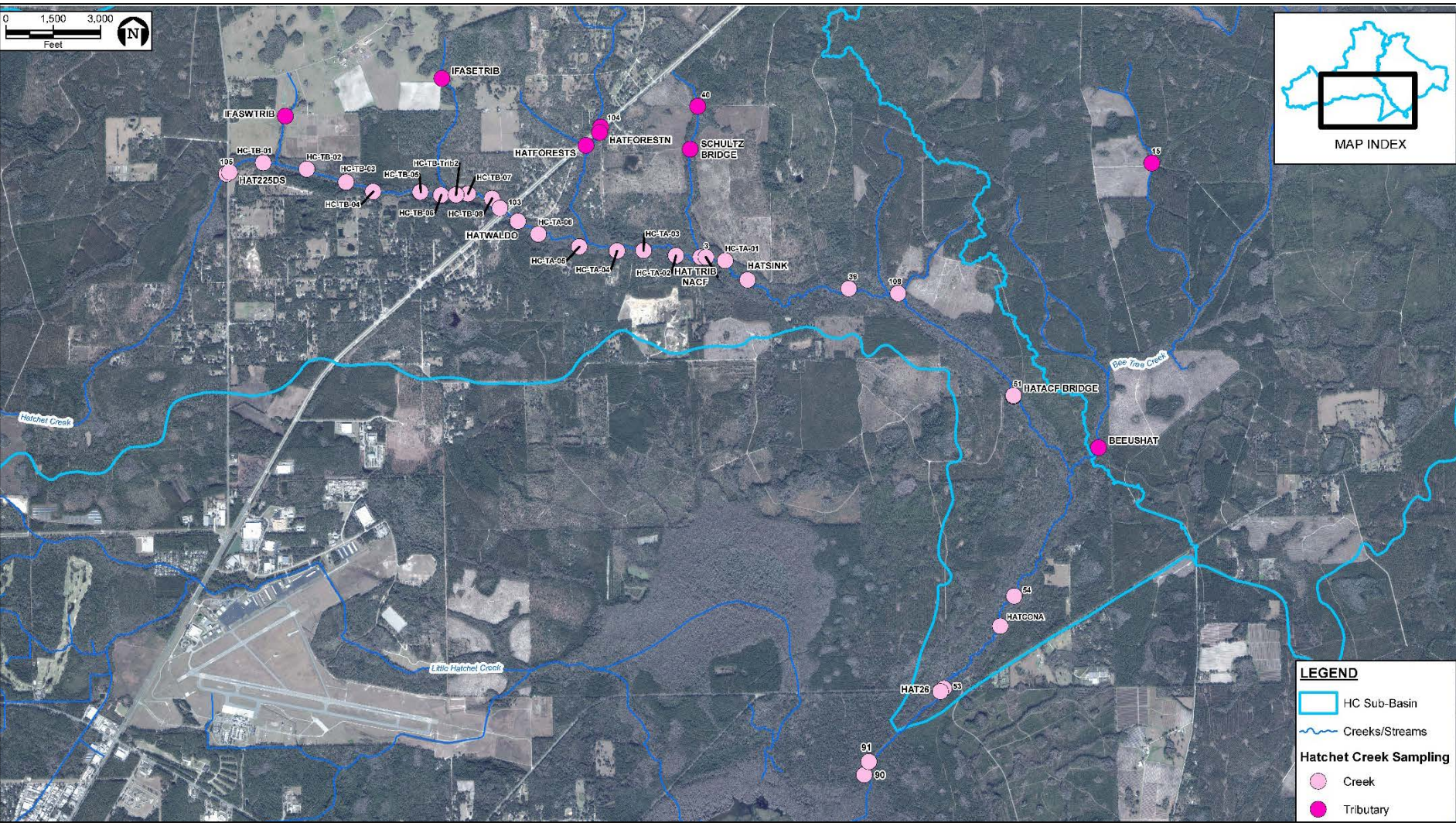


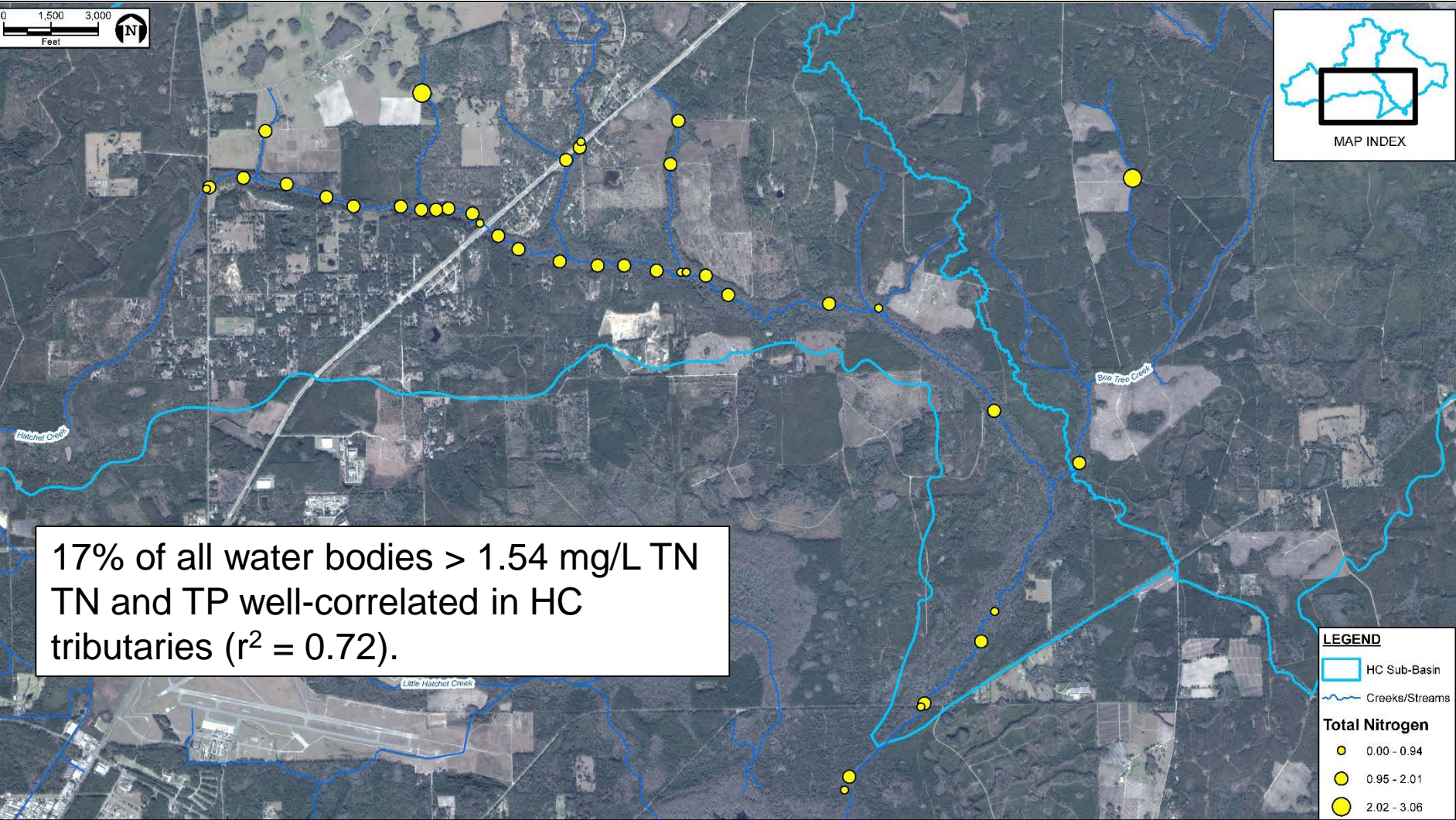
Land Use in Hatchet Creek Sub-basin

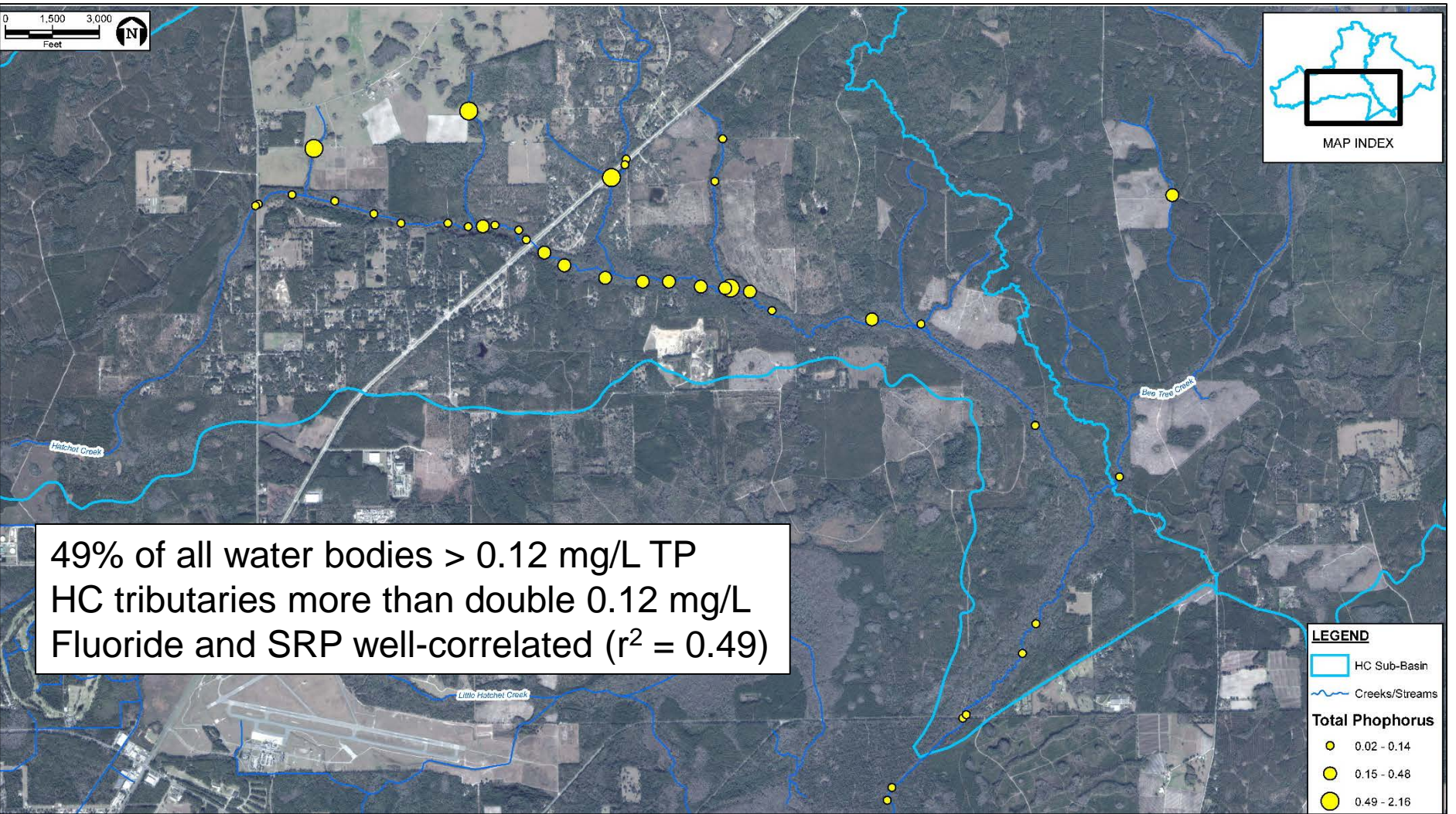
Land Use	Bee Tree Creek		Hatchet Creek		Hatchet Creek Tributary		Total	
	Acres	% Cover	Acres	% Cover	Acres	% Cover	Acres	% Cover
Urban/Built	838	5	1,852	11	489	7	3,179	8
Agriculture	792	5	553	3	91	1	1,436	3
Upland Non-Forested	909	6	232	1	110	1	1,250	3
Upland Forested	10,896	67	10,350	60	4,399	60	25,645	62
Water	5	0.03	31	0.2	13	0.2	50	0.1
Wetlands	2,744	17	4,234	24	2,238	30	9,217	22
Disturbed lands		0	14	0.1	28	0.4	42	0.1
Roads/Utilities	187	1	113	1	19	0.3	318	1
Total	16,371		17,379		7,387		41,138	



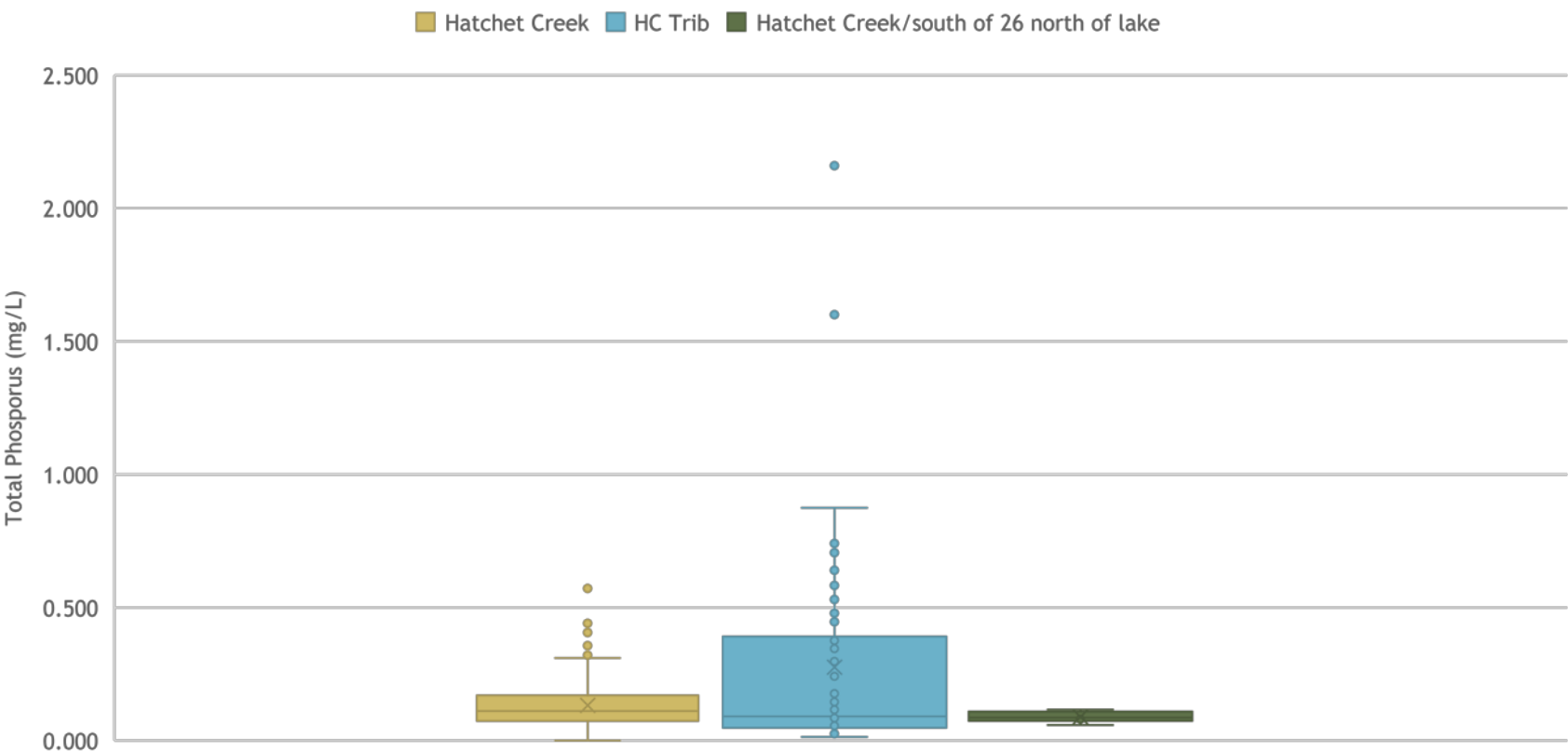


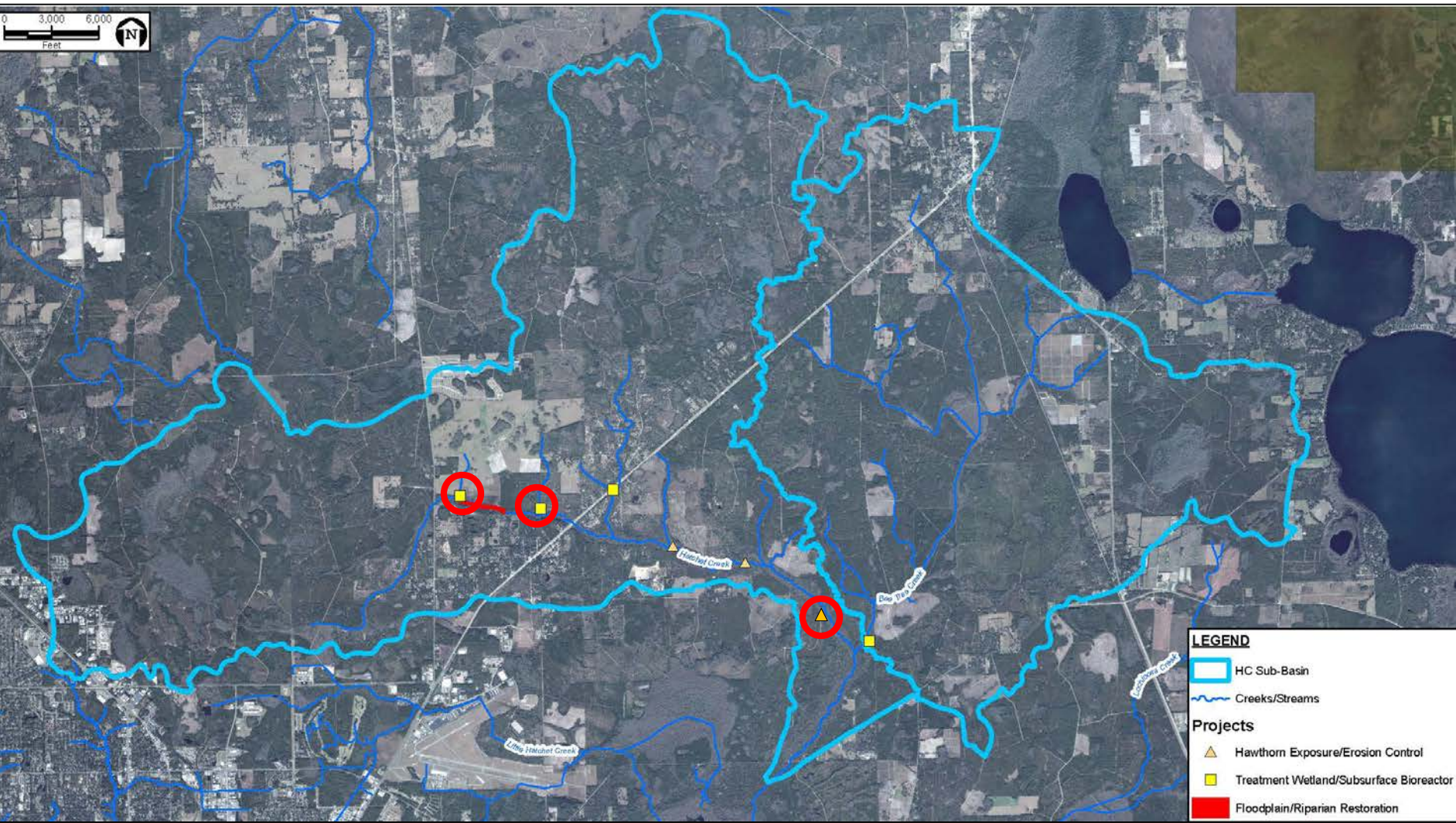






Average Total Phosphorus Concentrations

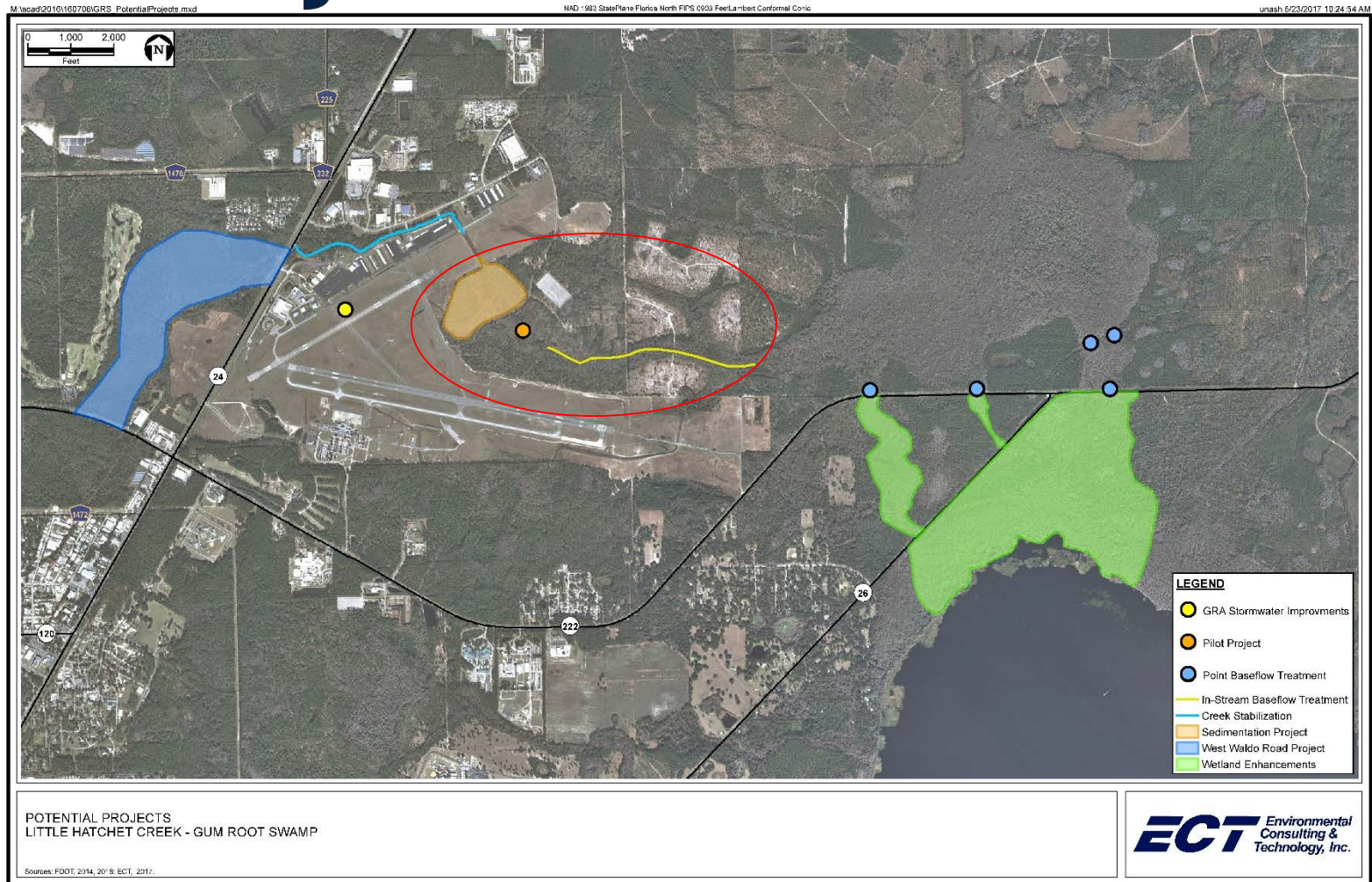




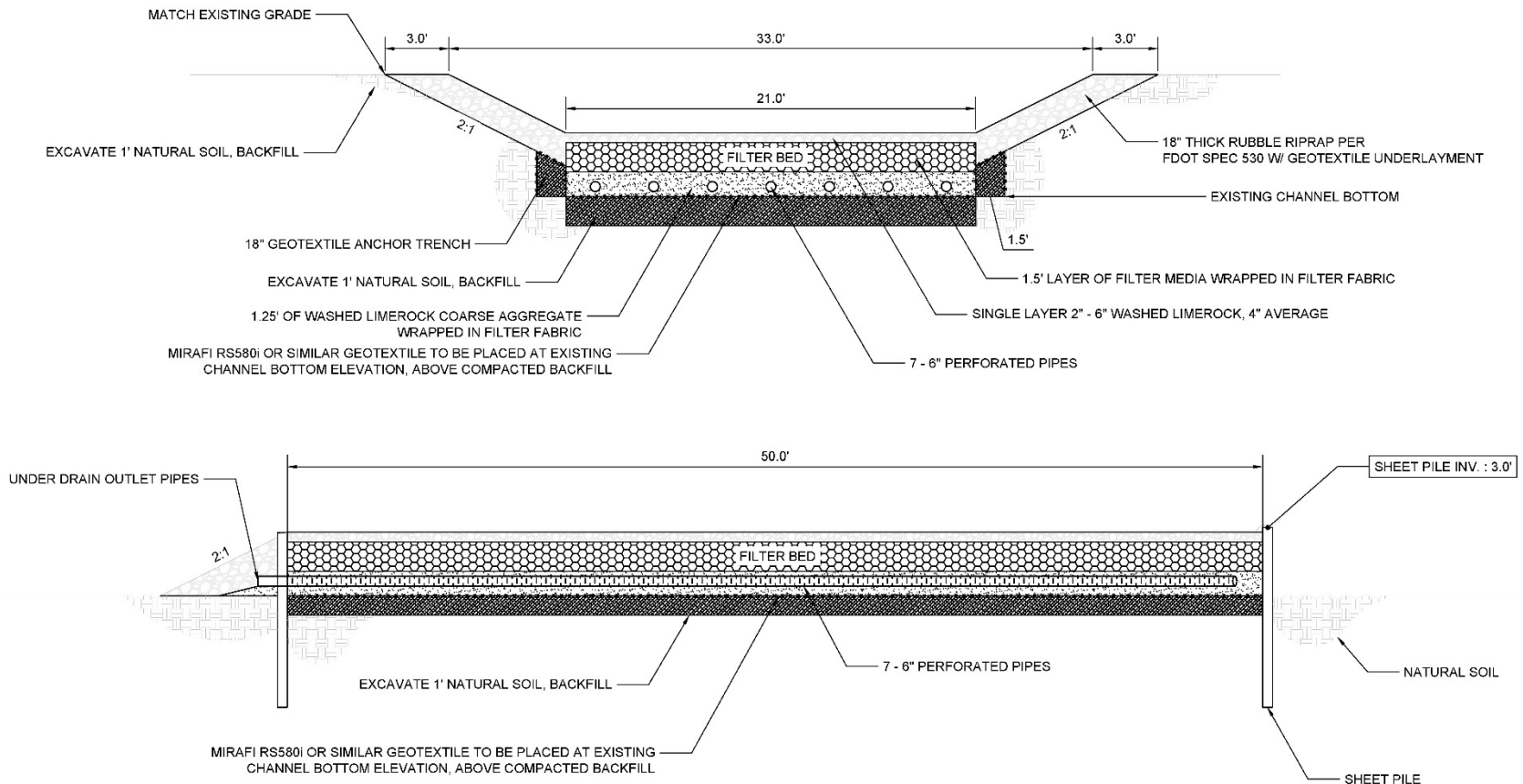
Phase II: Pilot Project

- ⦿ Design and Permitting (site selection, design, site approval, permitting)
- ⦿ Construction and oversight
- ⦿ Performance Assessment and Scalability

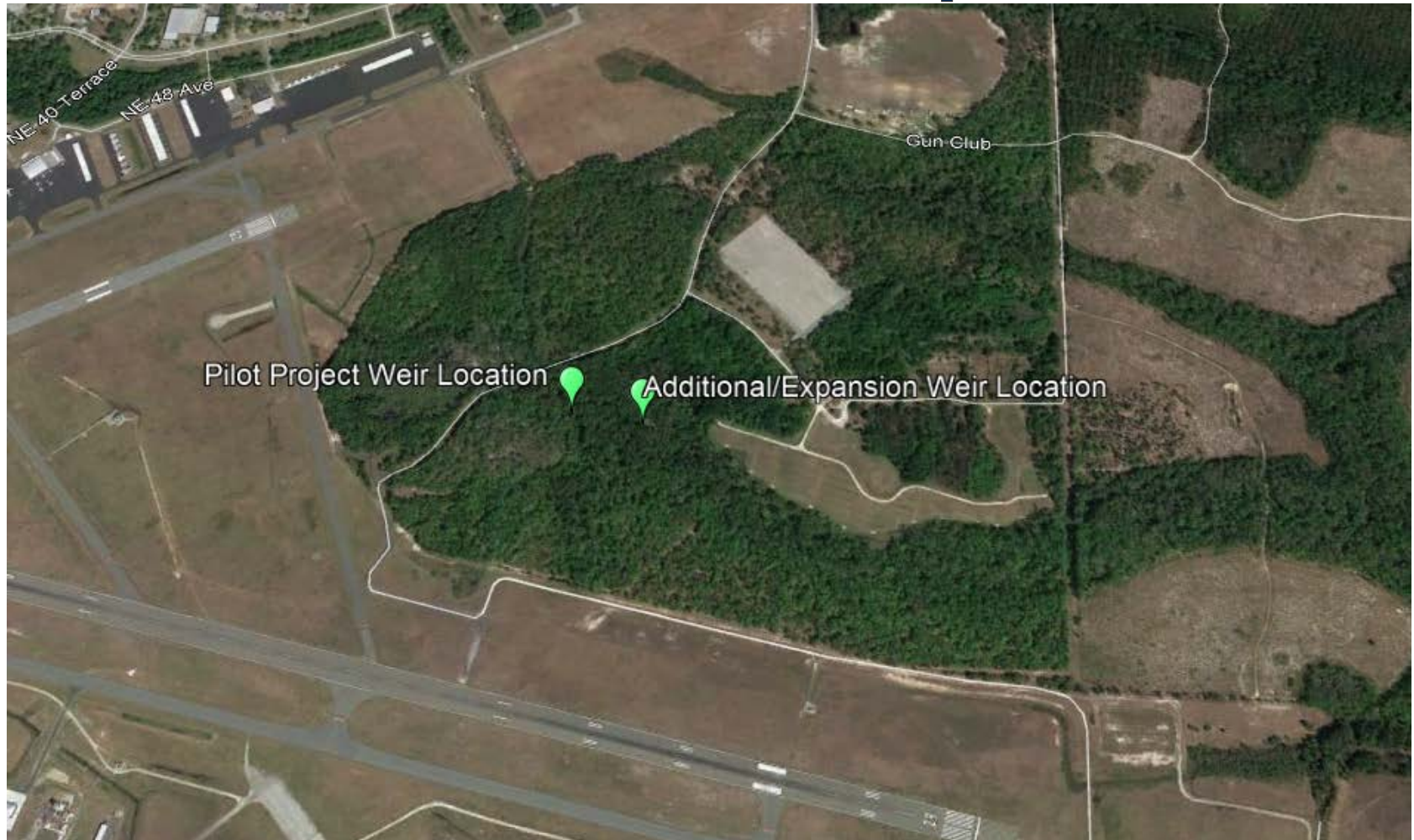
Pilot Project Location



Phase II: Pilot Project



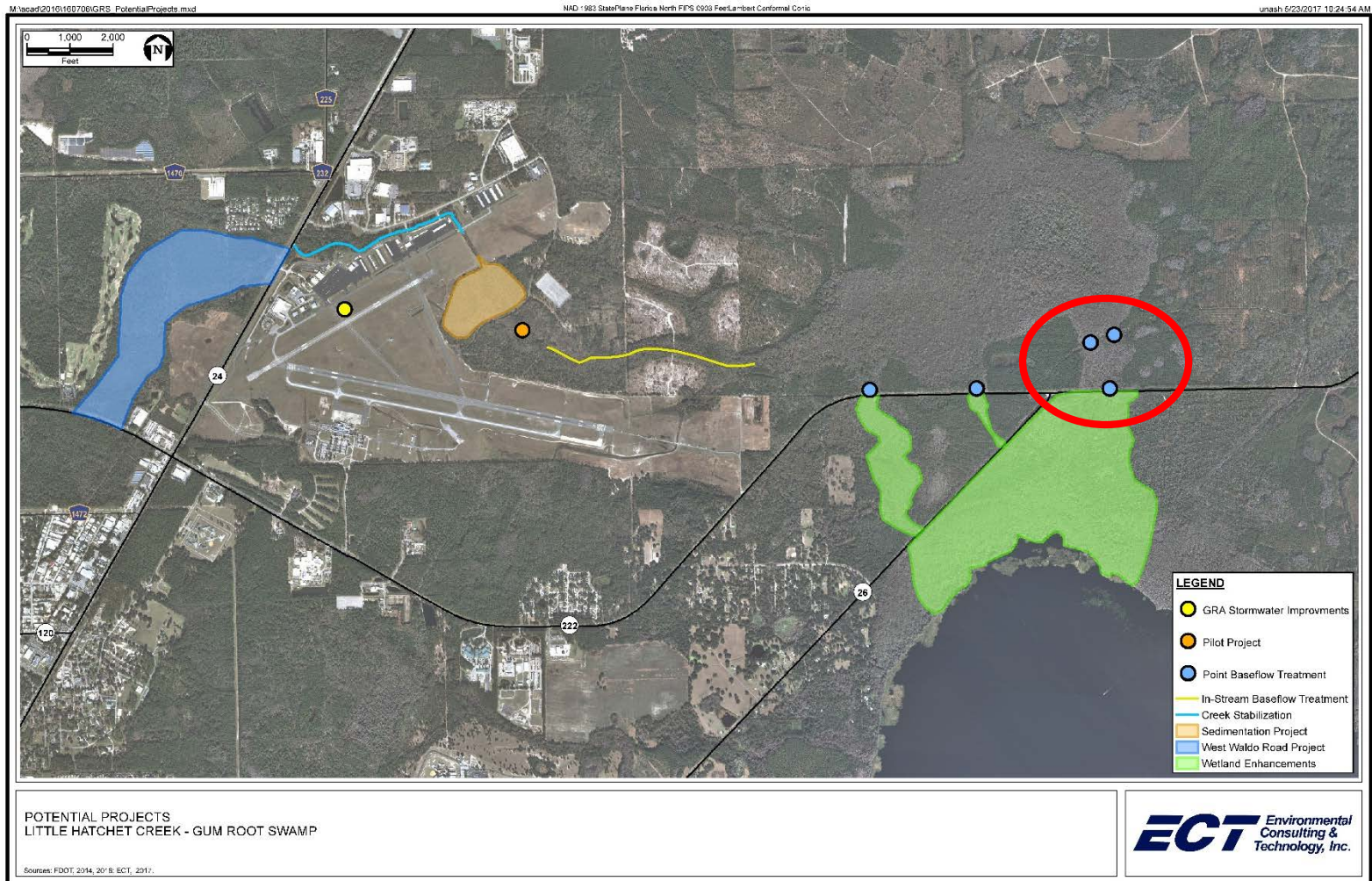
SJRWMD Cost Share Expansion



NLII: Phase III Request

- ◎ Amount Request \$470,000
 - Task 1: \$270,000
 - Expand treatment filter/weir concept into Gum Root Swamp
 - Task 2: \$200,000
 - Further assess nutrient loading from Hatchet Creek and design nutrient reduction treatment projects in areas identified for potential projects in phase II

NLII: Phase III Request



Thank You

- ◉ Questions?

- ◉ Contact Information

Angelique Bochnak, PhD

Senior Water Resources Scientist

abochnak@ectinc.com

352-332-0444

Robin Hallbourg, PG

Alachua County Environmental Protection Department

robin@alachuacounty.us

352-264-6825