

Preserve Rules

"Take nothing but pictures, leave nothing but footprints, kill nothing but time."

- ◆ Trails are open from 7 am to 6 pm October-March, 7 am to 8 pm April-September, 365 days a year. Visitors on the preserve outside these hours are trespassing.
- ◆ Use the fitness equipment only as intended by the manufacturer. Equipment is for users age 13 and above. Please see the labels on equipment for instructions on proper use.
- ◆ Pack out what you pack in.
- ◆ Trails are for pedestrians, bicyclists, and equestrian users only. Bikers must yield to hikers and horses, hikers must also yield to horses.
- ◆ Preserve patrons may not establish new trails without permission from the county.
- ◆ Help prevent erosion by staying on the trails.
- ◆ Collecting or disturbing plants, animals, artifacts, or fossils is prohibited.
- ◆ No taking, harassing, or killing of wildlife without written permission from Alachua County.
- ◆ Leashed dogs are allowed on trails provided owners pick up after them.

Advice for the Trails

- ◆ Natural areas & wildlife may be hazardous. Stay alert, stay on the established trails, and stay safe.
- ◆ During wet weather trails may be under water.
- ◆ Be prepared for rough or soft trails – some roadways are utilized for fire breaks and are periodically harrowed.
- ◆ For your comfort and safety, wear sunscreen or a hat, use insect repellent and carry water.

If you have a disability and need an accommodation in order to participate in a County program, service or public meeting, please contact the Equal Opportunity Office at 352-374-5275 at least 2 business days prior to the event. TDD users, please call 711 (Florida Relay Service).

About Alachua County Forever and Florida Communities Trust

The 376 acre Turkey Creek Preserve was purchased in 2009 by Alachua County through the Alachua County Forever Program using Wild Spaces Public Places sales taxes funds and a Florida Communities Trust Grant. The preserve was purchased to protect, preserve and enhance the unique natural and cultural resources found on the property and to provide an enjoyable and educational passive recreational experience.



Alachua County Forever is the County's Land Conservation Program that acquires, improves & manages environmentally significant lands that protect water resources, wildlife habitats and natural areas suitable for resource based recreation.

Florida Communities Trust is a state land acquisition grant program that provides funding to local governments and eligible non-profit environmental organizations for acquisition of community-based parks, open space and greenways that further outdoor recreation and natural resource protection needs identified in local government comprehensive plans.



Alachua County
Environmental Protection Department
Office of Land Conservation & Management
408 W. University Ave, Suite 106
Gainesville, FL 32601

Phone: 352-264-6868
E-mail: landconservation@alachuacounty.us
Web: <http://www.AlachuaCountyForever.us>



Turkey Creek Preserve

MAIN TRAILHEAD:

6300 NW 93RD AVE.

ALACHUA

PEDESTRIAN TRAILHEAD:

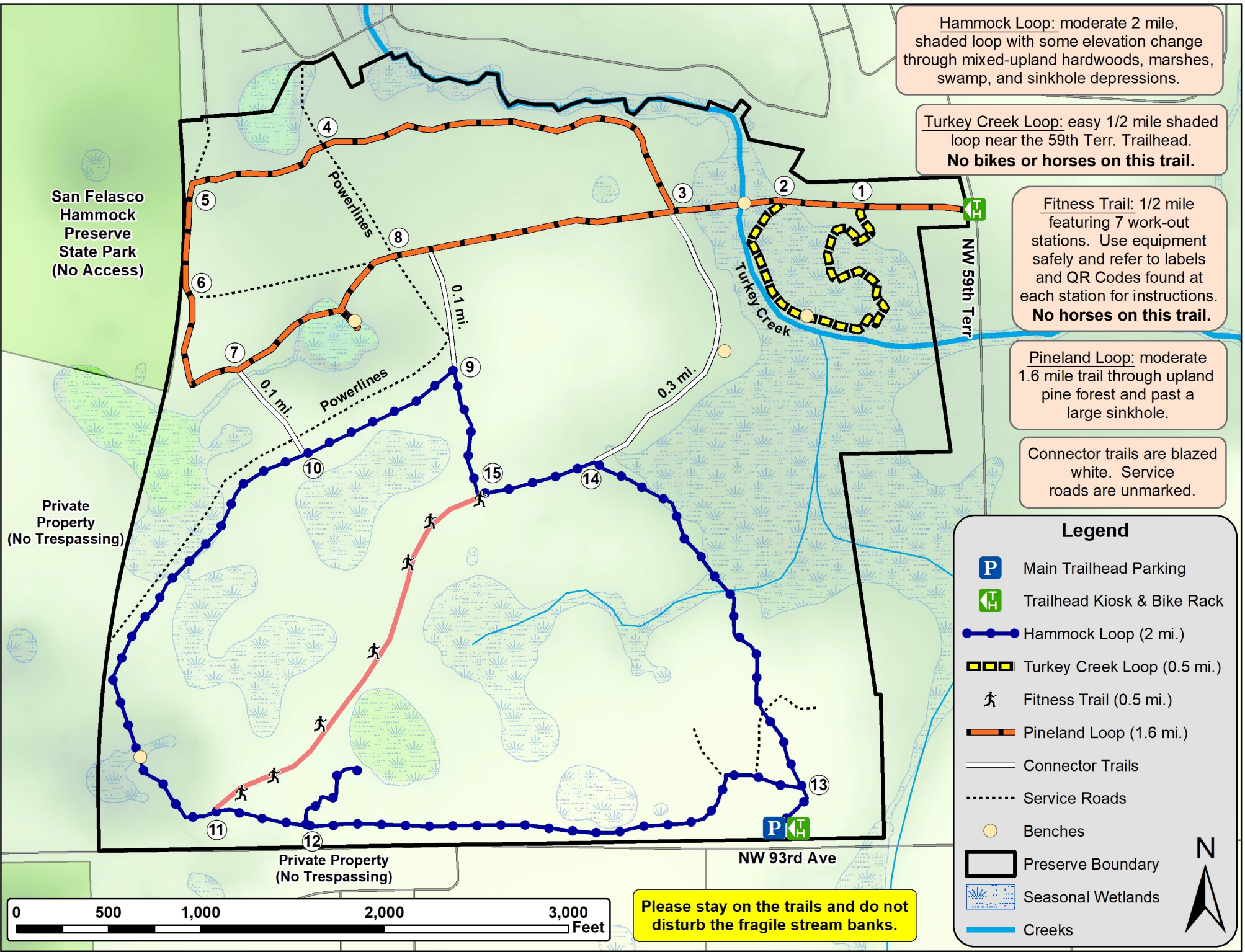
10182 NW 59TH TERR.

ALACHUA

TRAIL MAP



Woodland poppymallow,
Callirhoe papaver



San Felasco Hammock Preserve State Park (No Access)

Private Property (No Trespassing)

Private Property (No Trespassing)

NW 93rd Ave

NW 59th Terr

Powerlines

Powerlines

0.1 mi.

0.1 mi.

0.3 mi.

Turkey Creek

